

 **BOEING**
COMPONENT
MAINTENANCE MANUAL

TO: ALL HOLDERS OF EMERGENCY LIGHTS PANEL ASSEMBLY M43 COMPONENT MAINTENANCE
MANUAL 33-51-03

REVISION NO. 20 DATED JUL 01/04

HIGHLIGHTS

Pages which have been added or revised are outlined below together with the highlights of the revision. Remove and insert the affected pages as listed and enter Revision No. and date on the Record of Revision Sheet.

CHAPTER/SECTION

AND PAGE NO.

TR & SB RECORD

1

DESCRIPTION OF CHANGE

Update the TR and SB Record.

33-51-03

HIGHLIGHTS

01.1

Page 1

Jul 01/04

EMERGENCY LIGHTS PANEL ASSEMBLY, M43

PART NUMBERS 233T3210-22,-24,-25,-27 THRU -31,
-33,-35,-37,-38,-300 THRU
-307,-1022,-1024,-1025,
-1027 THRU -1031,-1033,
-1037,-1038,-1300 THRU
-1310
233T3100-86,-134,-225,-236,-289,
-301,-329,-415

COMPONENT MAINTENANCE MANUAL
WITH
ILLUSTRATED PARTS LIST

33-51-03

TITLE PAGE

Page 1

Jul 01/03

01.1



REVISION RECORD

- Retain this record in front of manual. On receipt of revision, insert revised pages in the manual, and enter revision number, date inserted and initial.

REVISION NUMBER	REVISION DATE	DATE FILED	BY	REVISION NUMBER	REVISION DATE	DATE FILED	BY

33-51-03

REVISION RECORD

01

Page 1

Jul 10/83

TEMPORARY REVISION AND SERVICE BULLETIN RECORD

BOEING SERVICE BULLETIN	BOEING TEMPORARY REVISION	OTHER DIRECTIVE	DATE OF INCORPORATION INTO MANUAL
233T3210-33-01		PRR B10085-1	JUL 10/81
		PRR B10145	JUL 10/81
		PRR B10147	JUL 10/81
		PRR B10439	JUL 10/83
		PRR B10169	JUL 10/83
		PRRVDC-T0013-1	JUL 10/83
		PRR N52497	OCT 10/83
		PRR B10487	OCT 10/83
		PRR N53112	JUL 10/85
		PRR N53112-1	JUL 10/85
		PRR B11110-2	JUL 10/85
		PRR C12526	OCT 10/85
		PRR B11632	JUL 01/88
		RR B41018-29	JAN 01/89
		PRR 53135-97	JAN 01/89
		PRR B12574	MAR 01/00
		233T3210-33-01R1	33-2 (767) 33-3 (757) 33-3 (767) 33-4 (757) 33-5 (757) 33-6 (767)
PRR B12901-10S	NOV 01/01		
	NOV 01/01		
	JUL 01/02		
	JUL 01/02		
	JUL 01/03		
		JUL 01/04	
		JUL 01/04	

33-51-03

TR & SB RECORD

01.1

Page 1

Jul 01/04



BOEING
 COMPONENT
 MAINTENANCE MANUAL

PAGE	DATE	CODE	PAGE	DATE	CODE
33-51-03			REPAIR-GENERAL		
TITLE PAGE			601	MAR 01/00	01.1
1	JUL 01/03	01.1	602	JUL 01/03	01.1
2	BLANK		603	MAR 01/00	01.1
REVISION RECORD			604	BLANK	
1	JUL 10/83	01	ILLUSTRATED PARTS LIST		
2	BLANK		1001	JUL 10/83	01
TR & SB RECORD			1002	MAR 01/02	01.1
*1	JUL 01/04	01.1	1003	MAR 01/02	01.1
2	BLANK		1004	JUL 01/03	01.1
LIST OF EFFECTIVE PAGES			1005	JUL 01/03	01.1
*1	JUL 01/04	01	1006	JUL 01/03	01.1
THRU LAST PAGE			1007	JUL 01/03	01.1
CONTENTS			1008	JUL 01/03	01.1
1	JUL 01/03	01.1	1009	JUL 01/03	01.1
2	BLANK		1010	JUL 01/03	01.1
INTRODUCTION			1011	JUL 01/03	01.1
1	OCT 01/89	01.1	1012	JUL 01/03	01.1
2	BLANK		1013	JUL 01/03	01.1
DESCRIPTION & OPERATION			1014	JUL 01/03	01.1
1	MAR 01/00	01.1	1015	JUL 01/03	01.1
2	BLANK		1016	JUL 01/03	01.1
TESTING & TROUBLE SHOOTING			1017	JUL 01/03	01.1
101	JUL 01/03	01.1	1018	JUL 01/03	01.101
102	JUL 01/03	01.1	1019	JUL 01/03	01.1
103	JUL 01/03	01.1	1020	JUL 01/03	01.101
104	JUL 01/03	01.1	1021	JUL 01/03	01.101
105	JUL 01/03	01.1	1022	JUL 01/03	01.1
106	MAR 01/00	01.1	1023	JUL 01/03	01.1
107	MAR 01/00	01.101	1024	JUL 01/03	01.1
108	BLANK		1025	BLANK	
			1026	JUL 01/03	01.101
			1027	JUL 01/03	01.1
			1028	JUL 01/03	01.1
			1029	JUL 01/03	01.101
			1030	JUL 01/03	01.101
			1031	JUL 01/03	01.1
			1032	JUL 01/03	01.101
			1033	JUL 01/03	01.1
			1034	JUL 01/03	01.101
			1035	JUL 01/03	01.101
			1036	JUL 01/03	01.101

* = REVISED, ADDED OR DELETED

33-51-03

EFFECTIVE PAGES
 CONTINUED Page 1
 01 Jul 01/04

PAGE	DATE	CODE	PAGE	DATE	CODE
ILLUSTRATED PARTS LIST		CONT.			
1037	JUL 01/03	01.101			
1038	JUL 01/03	01.101			
1039	JUL 01/03	01.1			
1040	JUL 01/03	01.1			
1041	JUL 01/03	01.1			
1042	BLANK				
1043	JUL 01/03	01.101			
1044	JUL 01/03	01.101			
1045	JUL 01/03	01.101			
1046	JUL 01/03	01.101			
1047	JUL 01/03	01.101			
1048	JUL 01/03	01.101			
1049	JUL 01/03	01.101			
1050	JUL 01/03	01.101			
1051	JUL 01/03	01.101			
1052	JUL 01/03	01.101			
1053	JUL 01/03	01.1			
1054	JUL 01/03	01.1			
1055	JUL 01/03	01.1			
1056	JUL 01/03	01.1			
1057	JUL 01/03	01.1			
1058	JUL 01/03	01.1			
1059	JUL 01/03	01.1			
1060	JUL 01/03	01.1			
1061	JUL 01/03	01.1			
1062	JUL 01/03	01.1			
1063	JUL 01/03	01.1			
1064	JUL 01/03	01.1			
1065	JUL 01/03	01.1			
1066	JUL 01/03	01.1			

* = REVISED, ADDED OR DELETED

33-51-03

EFFECTIVE PAGES
 LAST PAGE Page 2
 01 Jul 01/04



TABLE OF CONTENTS

<u>Paragraph Title</u>	<u>Page</u>
Description and Operation.	1
Testing and Trouble Shooting	101
Disassembly. * [1]	
Cleaning * [1]	
Check. * [1]	
Repair	601
Assembly * [2]	
Fits and Clearances (not applicable)	
Special Tools, Fixtures, and Equipment * [1]	
Illustrated Parts List	1001

* [1] Use applicable procedures in SOPM 20-11-05 and standard industry practices.

* [2] Special instructions not required.

33-51-03

CONTENTS

Page 1

Jul 01/03

01.1



INTRODUCTION

The instructions in this manual provide the information necessary to perform maintenance functions including test, fault isolation, and replacement of defective components.

This manual is divided into separate sections:

- | | |
|---|--------------------------------|
| 1. Title Page | 4. List of Effective Pages |
| 2. Record of Revisions | 5. Table of Contents |
| 3. Temporary Revisions &
Service Bulletin Record | 6. Introduction |
| | 7. Procedures and IPL Sections |

Refer to the Table of Contents for the page location of applicable sections.

An explanation of the use of the Illustrated Parts List is provided in the introduction to that section.

All weights and measurements used in the manual are in English units unless otherwise stated. When metric equivalents are given they will be in parentheses following the English units.

Design changes, optional parts, configuration differences and Service Bulletin modifications create alternate part numbers. These are identified in the Illustrated Parts List (IPL) by adding an alphabetical character to the basic item number. The resulting item number is called an alpha-variant. Throughout the manual, IPL basic item number references also apply to alpha-variants unless otherwise indicated.

Verification:

Testing Dec 3/84

33-51-03

INTRODUCTION

01.1

Page 1

Oct 01/89

EMERGENCY LIGHTS PANEL ASSEMBLY M43DESCRIPTION AND OPERATION**1.** Description

- A. The emergency lights panel assembly consists of indicator, and switches interconnected with a wire bundle assembly. All the components are mounted on a baseplate assembly.

2. Operation

- A. The Emergency Lights Panel Assembly is located on pilots' overhead panel P5. The Emergency Lights Panel Assembly circuitry contains an EMER LIGHTS switch, an UNARMED indicator light, and a pushbutton PASS OXY switch.

- (1) EMER LIGHTS switch S1 is a three-position toggle switch which provides a ground path to UNARMED indicator light L1.
- (2) The switch S1 is guarded with a safety cover. To move the switch to the OFF or ON position, the operator must raise the safety guard. The switch will go back to ARM position when the safety guard is closed.
- (3) The pushbutton PASS OXY switch S2 is a lighted pushbutton switch with momentary action. The switch is illuminated using 28VDC incoming power from the overhead circuit breaker panel, P11.

33-51-03

DESCRIPTION & OPERATION

01.1

Page 1

Mar 01/00

TESTING AND TROUBLE SHOOTING1. Test Equipment

A. Power Supplies:

(1) 28.0 volt dc, 10%, 1 ampere maximum

(2) 5v ac, 400 Hz

B. Multimeter: Any model in the Simpson 260 series of multimeters/VOMs or equivalent

C. Test connectors: BACC45FT12-12S7 and BACC45FT16-24S (Boeing breakout box A33003-2 with cables A33003-10 and -26 may be used.)

2. Testing (Fig. 101)

A. Connect BACC45FT12-12S7 to J1 and BACC45FT16-24S to J2.

NOTE: Switch S2 (P/N S231T290-1041) is a momentary switch with a relamp lockout feature requiring the proper switch master module. If S2 is reworked, verify that switch contains a master module with relamp lockout feature per vendor service information.

B. Refer to Fig. 101 for component placement and test assembly components as specified in Fig. 102.

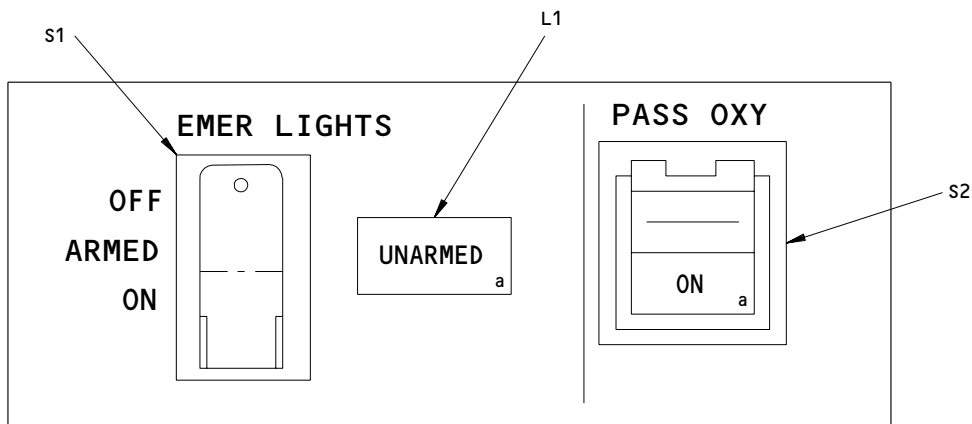
33-51-03

TESTING & TROUBLE SHOOTING

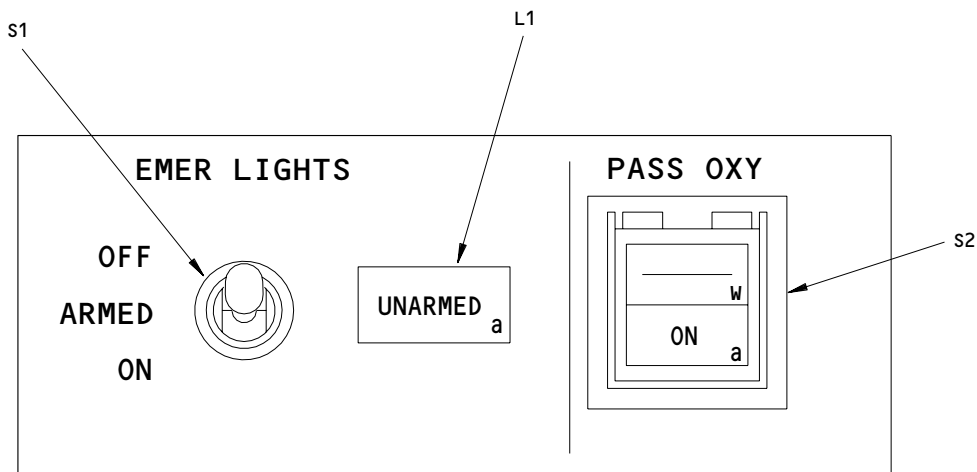
01.1

Page 101

Jul 01/03



233T3210-22,-24,-25,-27 THRU -31,-33,-35,-300,-301,-303,-304,-306,
 -1022,-1024,-1025,-1027 THRU -1031,-1033,-1300,-1301,-1303,
 -1304,-1306 THRU -1310
 233T3100-86,-134,-225,-236,-289,-301,-329

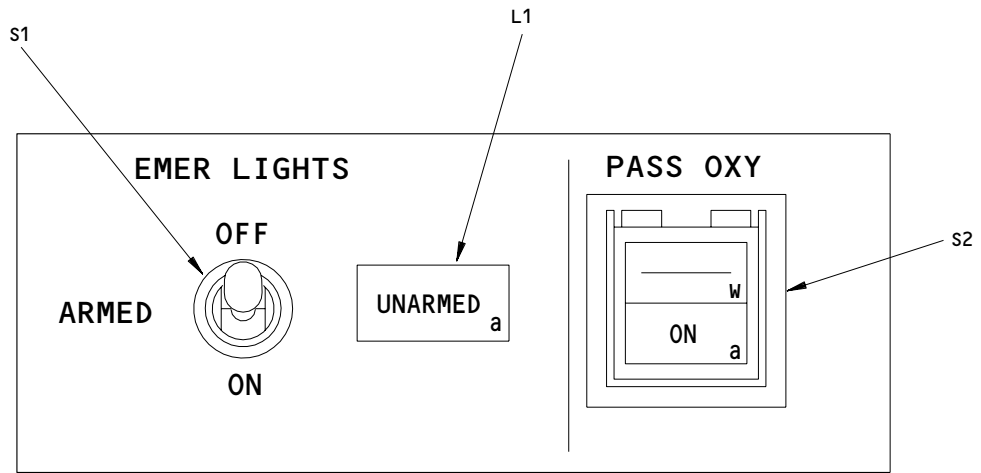


233T3210-38,-302,-1038,-1302

Panel Component Identification
 Figure 101 (Sheet 1)

33-51-03

TESTING & TROUBLE SHOOTING
 01.1 Page 102
 Jul 01/03



233T3210-37,-305,-307,-1037,-1305
233T3100-415

Panel Component Identification
Figure 101 (Sheet 2)

L01064

TEST PROCEDURE	REQUIRED RESULTS	COMPONENT TESTED												
<u>SWITCH S1 TESTS</u>														
Adjust S1 to the positions shown and measure ohms (Continuity - less than 3 ohms, Open - greater than 100K). Measure between pins:														
<p style="text-align: right;">J2-8 to J2-1</p> <p style="text-align: right;">J2-8 to J2-7</p> <p style="text-align: right;">J2-8 to J2-11</p>	<table style="width: 100%; border-collapse: collapse;"> <tr> <td style="width: 33%;"><u>OFF</u></td> <td style="width: 33%;"><u>ARMED</u></td> <td style="width: 33%;"><u>ON</u></td> </tr> <tr> <td>Cont</td> <td>Cont</td> <td>Open</td> </tr> <tr> <td>Open</td> <td>Cont</td> <td>Cont</td> </tr> <tr> <td>Cont</td> <td>Open</td> <td>Open</td> </tr> </table>	<u>OFF</u>	<u>ARMED</u>	<u>ON</u>	Cont	Cont	Open	Open	Cont	Cont	Cont	Open	Open	S1
<u>OFF</u>	<u>ARMED</u>	<u>ON</u>												
Cont	Cont	Open												
Open	Cont	Cont												
Cont	Open	Open												
<p style="text-align: right;">J2-9 to J2-5</p> <p style="text-align: right;">J2-12 to J2-13</p> <p style="text-align: right;">J2-10 to J2-5</p>	<table style="width: 100%; border-collapse: collapse;"> <tr> <td style="width: 33%;">Open</td> <td style="width: 33%;">Open</td> <td style="width: 33%;">Cont</td> </tr> <tr> <td>Cont</td> <td>Open</td> <td>Cont</td> </tr> <tr> <td>Cont</td> <td>Open</td> <td>Open</td> </tr> </table>	Open	Open	Cont	Cont	Open	Cont	Cont	Open	Open				
Open	Open	Cont												
Cont	Open	Cont												
Cont	Open	Open												
Connect J2-3 (+), J2-2 (-)	<table style="width: 100%; border-collapse: collapse;"> <tr> <td style="width: 33%;">1.5K Max</td> <td style="width: 33%;">Open</td> <td style="width: 33%;">Open</td> </tr> </table>	1.5K Max	Open	Open	S1,CR1									
1.5K Max	Open	Open												
<u>SWITCH S2 TESTS</u>														
Measure ohms with S2 pressed and with S2 released.														
J1-9 to J1-10	<table style="width: 100%; border-collapse: collapse;"> <tr> <td style="width: 50%;"><u>Press</u></td> <td style="width: 50%;"><u>Release</u></td> </tr> <tr> <td>Cont</td> <td>Open</td> </tr> </table>	<u>Press</u>	<u>Release</u>	Cont	Open	S2								
<u>Press</u>	<u>Release</u>													
Cont	Open													
<u>J3 TESTS</u> (For all except 233T3210-300 thru -307, -1300 thru -1310, 233T3100-86,-134,-225,-236,-289,-301,-329,-415)														
Measure ohms between:														
<p>J1-1 to J3 center post</p> <p>J1-2 to Chassis ground</p> <p>J1-2 to J1-1</p>	<p>Cont</p> <p>Cont</p> <p>Open</p>	J3												

Functional Test
Figure 102 (Sheet 1)

33-51-03

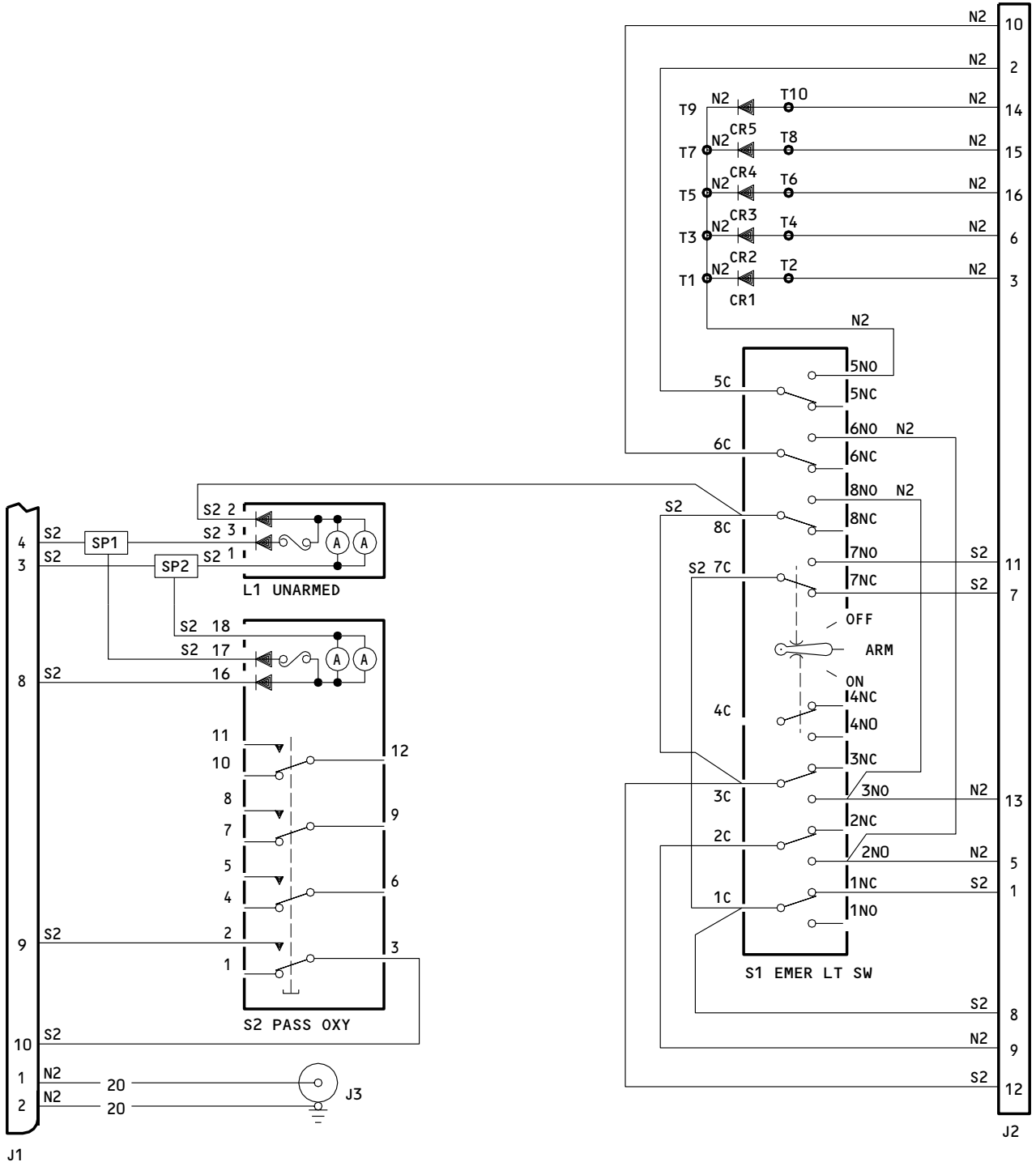

BOEING
 COMPONENT
 MAINTENANCE MANUAL

TEST PROCEDURE	REQUIRED RESULTS	COMPONENT TESTED
<u>LIGHTPLATE TEST</u> (For 233T3210-300 thru -307, -1300 thru -1310, 233T3100-86,-134,-225,-236,-289,-301,-329,-415)		
Connect 5v ac to J1-1 and ground to J1-2.		
Monitor the lightplate light.	Illuminate	Lightplate J3
<u>DIODE TESTS</u>		
Set S1 to OFF.		
Connect ohmmeter (-) lead to J2-2.		
Connect (+) lead in turn to pins listed and read ohms.		
J2-6	1.5K max	CR2
J2-14	1.5K max	CR5
J2-15	1.5K max	CR4
J2-16	1.5K max	CR3
Connect ohmmeter (+) lead to J2-2 (S1 still OFF).		
Connect (-) lead to listed pins in turn and read ohms.		
J2-3	15K min	CR1
J2-6	15K min	CR2
J2-14	15K min	CR5
J2-15	15K min	CR4
J2-16	15K min	CR3

Functional Test
 Figure 102 (Sheet 2)

33-51-03

TESTING & TROUBLE SHOOTING
 01.1 Page 105
 Jul 01/03



J1

NOTE: WIRE IS BMS 13-48, TY I, CL 1, AWG 22
 UNLESS OTHERWISE SPECIFIED. SEPARATION:
 SEE REPAIR FOR WIRE SEPARATION
 CATEGORIES N2, S2.

Schematic Diagram
 Figure 103

33-51-03

TESTING & TROUBLE SHOOTING
 01.101 Page 107
 Mar 01/00

**BOEING**
COMPONENT
MAINTENANCE MANUALREPAIR1. Materials

- A. Varglas Non-Fray, Type H0 or HP sleeving (Varflex Corp., 512 W. Court Street, Rome, New York 13440)
- B. Loctite sealant type 242 or 222 without primer (Loctite Corp., 705 North Mountain Road, Newington, Connecticut 06111-1411)
- C. Primer: BMS 10-11, type I (SOPM 20-60-02)
- D. Enamel: Hi-speed Lacquer, Boeing Color 8328

2. To repair the unit, you can use the standard industry practices and the procedures in SOPM 20-11-05 unless shown below.

- A. When replacing wires, bundle the wires as follows:
 - (1) Separate wires by categories: N2 (white), S2 (blue)
 - (2) Maintain 1/4-inch spacing between bundles.
 - (3) Use Varglas Non-Fray Type H0 or HP and 63-9273-2 separators as required to ensure 1/4-inch separation.

- B. When you replace the baseplate assembly baseplate (Fig. 2-32, -35; Fig. 3-55), apply loctite sealant (type 242 or 222 without primer) to threaded parts of the screws (Fig. 2-40, -40A; Fig. 3-60, -60A) before you tighten.

NOTE: After you tighten the screws, touch up the screw heads as follow:

- Apply one coat of BMS 10-11, type I primer per SOPM 20-41-02.
- Prepare the surface and apply two coats of Hi-speed Lacquer, Boeing color 8328, flat per SOPM 20-41-04.

33-51-03

REPAIR-GENERAL

01.1

Page 601

Mar 01/00

- C. When you replace the pushbutton switch S231T290-xxx, torque the mounting screws to 5-20 ounce-inches.
- D. When you replace the baseplate (Fig. 2-32, -35; Fig. 3-55), install the press nut (Fig. 2-45; Fig. 3-65), if required, per Fig. 601.
- E. When you replace the Korry lighted pushbutton switch, make sure that you use the switch with the letter "D" imprinted on the master module of the switch. The Korry part number of the master module with the configuration "D" marked is 13202-001.

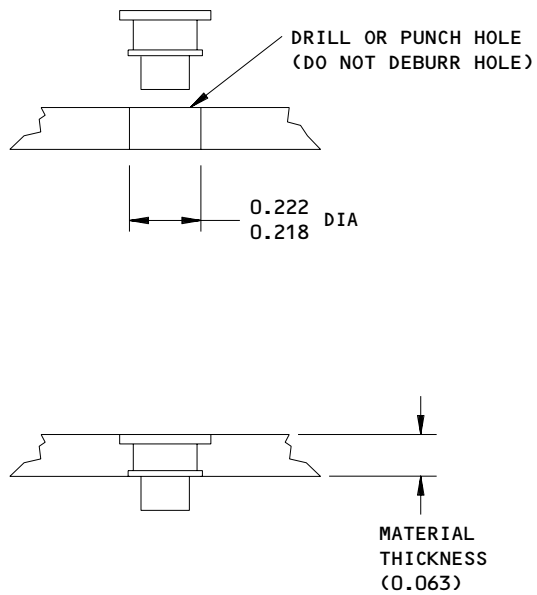
33-51-03

REPAIR-GENERAL

01.1

Page 602

Jul 01/03



ALL DIMENSIONS ARE IN INCHES

Press Nut Installation
Figure 601

33-51-03

REPAIR-GENERAL

01.1

Page 603

Mar 01/00



ILLUSTRATED PARTS LIST

1. This section lists and illustrates replaceable or repairable component parts. The Illustrated Parts Catalog contains a complete explanation of the Boeing part numbering system.
2. Indentures show parts relationships as follows:

Assembly

Detail Parts for Assembly

Subassembly

Attaching Parts for Subassembly

Detail Parts for Subassembly

Detail Installation Parts (Included only if installation parts may be returned to shop as part of assembly)

3. One use code letter (A, B, C, etc.) is assigned in the EFF CODE column for each variation of top assembly. All listed parts are used on all top assemblies except when limitations are shown by use code letter opposite individual part entries.
4. Letter suffixes (alpha-variants) are added to item numbers for optional parts, Service Bulletin modification parts, configuration differences (except left- and right-hand parts), product improvement parts, and parts added between two sequential item numbers. The alpha-variant is not shown on illustrations when appearance and location of all variants of the part is the same.
5. Service Bulletin modifications are shown by the notations PRE SB XXXX and POST SB XXXX.
 - A. When a new top assembly part number is assigned by Service Bulletin, the notations appear at the top assembly level only. The configuration differences at detail part level are then shown by use code letter.
 - B. When the top assembly part number is not changed by the Service Bulletin, the notations appear at the detail part level.

6. Parts Interchangeability

Optional
(OPT)

The parts are optional to and interchangeable with other parts having the same item number.

Supersedes, Superseded By
(SUPSDS, SUPSD BY)

The part supersedes and is not interchangeable with the original part.

Replaces, Replaced By
(REPLS, REPLD BY)

The part replaces and is interchangeable with, or is an alternate to, the original part.

33-51-03

ILLUSTRATED PARTS LIST

01

Page 1001

Jul 10/83

VENDORS

05617 IDD AEROSPACE CORP
 18225 NORTHEAST 76TH STREET PO BOX 97056
 REDMOND, WASHINGTON 98073-9756
 FORMERLY FARWEST ELEC INC; FORMERY IN BELLEVUE, WA;
 FORMERLY BELL IND FARWEST MFG DIV; FORMERLY BELL IND
 ILLUMINATED DISPLAYS DIV

08524 DEUTSCH FASTENER CORP SEE CODE V97928

12324 DUPREE INC STAKE FASTENER CO
 14395 RAMONA PO BOX 1797
 CHINO, CALIFORNIA 91708
 FORMERLY DUPREE MFG CO IN SOUTH EL MONTE, CALIFORNIA
 FORMERLY STAKE FASTENER CO DIV OF DUPREE INC

15653 FAIRCHILD FASTENERS KAYNAR PRODUCTS DIV
 800 S STATE COLLEGE BLVD
 FULLERTON, CALIFORNIA 92831-3001
 FORMERLY VK6405 MICRODOT AEROSP LTD; FORMERLY KAYNAR TECH
 KAYNAR DIV

28277 DEXTER-WILSON CORP
 4133 STONE WAY NORTH
 SEATTLE, WASHINGTON 98103-8013
 FORMERLY H K WILSON V0137B
 FORMERLY DEXTER CORP

51896 SPECTRA LUX CORP
 11825 120TH AVENUE NORTHEAST
 KIRKLAND, WASHINGTON 98034
 FORMERLY IN BELLEVUE, WASHINGTON

60119 MONADNOCK CO THE
 18301 ARENTH AVENUE PO BOX 1222
 CITY OF INDUSTRY, CALIFORNIA 91749
 FORMERLY UNITED CARR FASTENER CORP VB0051 VB0056 VB0076
 FORMERLY TRW ELECTRONIC COMPONENTS CINCH-MONADNOCK DIV
 FORMERLY CINCH-MONADNOCK DIV OF TRW INC V76530

72962 HARVARD INDUSTRIES INC
 3 WERNER WAY SUITE 210
 LEBANON, NEW JERSEY 08833
 FORMERLY AMERACE CORP ESNA DIV
 FORMERLY ELASTIC STOP NUT IN UNION, NJ

33-51-03

ILLUSTRATED PARTS LIST
01.1 Page 1002
 Mar 01/02

**BOEING**
COMPONENT
MAINTENANCE MANUALVENDORS

81590 KORRY ELECTRONIC INC SUB OF CRITON CORP
901 DEXTER AVENUE NORTH
SEATTLE, WASHINGTON 98109-3515
FORMERLY KORRY, BORIS VB0021 AND KORRY MFG CO

88245 WINCHESTER ELECTRONICS LITTON SYSTEMS INC USECO DIV
13536 SATICOY STREET
VAN NUYS, CALIFORNIA 91409
FORMERLY U.S. ENGINEERING CO V88245 AND LITTON PRECISION
PRODUCTS INC USECO DIV LITTON IND AND LITTON SYSTEMS
INC USECO DIV

91929 HONEYWELL INC MICRO SWITCH DIV
11 WEST SPRING STREET
FREEPORT, ILLINOIS 61032
FORMERLY MICRO SWITCH A DIV OF HONEYWELL
FORMERLY V74059 AND V40228

96182 EATON CORP AEROSPACE AND COMMERCIAL CONTROLS DIV MSC PROD
1640 MONROVIA
COSTA MESA, CALIFORNIA 92627-4405
FORMERLY MASTER SPECIALITIES CO IN GARDENA, CALIFORNIA

33-51-03ILLUSTRATED PARTS LIST
01.1 Page 1003
Mar 01/02

REFERENCE DESIGNATOR INDEX (SEE SCHEMATIC DIAGRAM)		
REFERENCE DESIGNATOR	PART NUMBER	FIG-ITEM
CR1-CR5	JANTX1N5618	2-90
CR1-CR5	JANTX1N5618	3-100
CR1-CR5	JANTX1N5618	4-90
J1	BACC45FN12-12P7	2-70
J1	BACC45FN12-12P7	3-90
J1	BACC45FN12-12P7	4-80
J2	BACC45FN16-24P	2-75
J2	BACC45FN16-24P	3-95
J2	BACC45FN16-24P	4-85
J3	800-000121-1	3-50A
J3	800000121-1	2-30
J3	800000121-1	3-50
J3	800000121-1	4-40
L1	BCREF6199	2-5A
L1	BCREF6199	5D
L1	BCREF6199	3-25
L1	BCREF6199	4-15
L1	BCREF8550	2-5C
L1	BCREF8550	5G
L1	BCREF8550	3-25A
L1	BCREF8550	25B
L1	BCREF8550	4-15A
L1	BCREF8550	15B
S1	68AT34-1	2-20
S1	68AT34-1	3-40
S1	68AT34-1	4-30
S1	68AT34-1A	2-20A
S1	68AT34-1A	3-40A
S1	68AT34-1A	4-30A
S2	BCREFA0518	2-10L
S2	BCREFA0518	10M
S2	BCREFA0518	10N
S2	BCREFA0518	10Q
S2	BCREFA0518	10U
S2	BCREFA0518	10Y
S2	BCREFA0518	11A
S2	BCREFA0518	11B
S2	BCREFA0518	3-30A
S2	BCREFA0518	30C
S2	BCREFA0518	30D
S2	BCREFA0518	30E
S2	BCREFA0518	30J
S2	BCREFA0518	30M
S2	BCREFA0518	30N

33-51-03

 ILLUSTRATED PARTS LIST
 01.1 Page 1004
 Jul 01/03


BOEING
 COMPONENT
 MAINTENANCE MANUAL

REFERENCE DESIGNATOR INDEX (SEE SCHEMATIC DIAGRAM)		
REFERENCE DESIGNATOR	PART NUMBER	FIG-ITEM
S2	BCREFA0518	4-20F
S2	BCREFA0518	20G
S2	BCREFA0518	20H
S2	BCREFA0518	20M
S2	BCREFA0518	20R
S2	BCREF7618	2-10C
S2	BCREF7618	10E
S2	BCREF7618	10F
S2	BCREF7618	10T
S2	BCREF7618	11
S2	BCREF7618	3-30
S2	BCREF7618	30L
S2	BCREF7618	4-20B
S2	BCREF7618	20D
S2	BCREF7618	20L
S2	S231T290-5041	2-10J
S2	S231T290-5041	10K
S2	S231T290-5041	10R
S2	S231T290-5041	3-30B
S2	S231T290-5041	30F
S2	S231T290-5041	30K
S2	S231T290-5041	4-20E
S2	S231T290-5041	20J
S2	4336731004-4241	3-30H
S2	851-30768-2041	2-10
S2	851-30768-2041	10V
S2	851-30768-2041	4-20
S2	851-30768-2041	20N
S2	851-30768-3041	2-10B
S2	851-30768-3041	10D
S2	851-30768-3041	10P
S2	851-30768-3041	10W

33-51-03

 ILLUSTRATED PARTS LIST
 01.1 Page 1005
 Jul 01/03

REFERENCE DESIGNATOR INDEX (SEE SCHEMATIC DIAGRAM)		
REFERENCE DESIGNATOR	PART NUMBER	FIG-ITEM
S2	851-30768-3041	4-20A
S2	851-30768-3041	20C
S2	851-30768-3041	20P
S2	851-35100-5041	2-10S
S2	851-35100-5041	10X
S2	851-35100-5041	10Z
S2	851-35100-5041	3-30G
S2	851-35100-5041	4-20K
S2	851-35100-5041	20Q
S2	851-35100-5041	20S
T1-T10	4443B9	2-95
T1-T10	4443B9	3-105
T1-T10	4443B9	4-95

33-51-03

 ILLUSTRATED PARTS LIST
 01.1 Page 1006
 Jul 01/03


BOEING
 COMPONENT
 MAINTENANCE MANUAL

PART NUMBER	AIRLINE PART NO.	FIG.	ITEM	TTL REQ
BACC45FN12-12P7		2	70	1
		3	90	1
		4	80	1
BACC45FN16-24P		2	75	1
		3	95	1
		4	85	1
BACN10NW1		2	65	4
		3	85	4
		4	75	4
BACN10PA06-6		2	45	2
		3	65	2
		4	55	2
BACP10U0225N		2	55	1
		3	75	1
		4	65	1
BACS12CK04U5		3	80A	4
		3	110A	3
		2	50	4
BACS12CK06U5		3	70	4
		4	60	4
		3	115A	3
BACS21DD1B		2	14	
		2	10L	1
		2	10M	1
BACW10EC06C		2	10N	1
		2	10Q	1
		2	10U	1
BCREFA0518		2	10Y	1
		2	11A	1
		2	11B	1
		3	34	
		3	30A	1
		3	30C	1
		3	30D	1
		3	30E	1
		3	30J	1
		3	30M	1
		3	30N	1
		4	20F	1
		4	20G	1
		4	20H	1
		4	20M	1
		4	20R	1
		2	5	
		2		
BCREF6106				

33-51-03

ILLUSTRATED PARTS LIST

01.1

Page 1007

Jul 01/03

PART NUMBER	AIRLINE PART NO.	FIG.	ITEM	TTL REQ
BCREF6199		2	5A	1
		2	5D	1
		2	5F	
		3	25	1
BCREF7618		4	15	1
		2	11	1
		2	10C	1
		2	10E	1
		2	10F	1
		2	10T	1
		3	30	1
		3	30L	1
		4	20B	1
		4	20D	1
		4	20L	1
BCREF8438		2	5B	
BCREF8550		2	5C	1
		2	5E	
		2	5G	1
		3	25A	1
		3	25B	1
		4	15A	1
		4	15B	1
DBMB1400-6A1		2	50	4
		3	70	4
		4	60	4
FH6C5CPL12BN		3	60B	3
		2	90	5
JANTX1N5618		3	100	5
		4	90	5
K19798-04		2	65	4
		3	85	4
		4	75	4
MS35338-41		2	105	3
		3	115	3
		4	105	3
NAS1801-04-5		2	60	4
		3	80	4
		4	70	4
NAS1801-06-5		2	100	3
		3	110	3
		4	100	3
NAS514P632-5		2	40	3
		3	60	3
		4	50	3

33-51-03

 ILLUSTRATED PARTS LIST
 01.1 Page 1008
 Jul 01/03


BOEING
 COMPONENT
 MAINTENANCE MANUAL

PART NUMBER	AIRLINE PART NO.	FIG.	ITEM	TTL REQ
NAS514P632-5P		2	40A	3
		3	60A	3
		4	50A	3
RMA4812-160-40		2	65	4
		3	85	4
		4	75	4
SF6G6CBB5D		2	45	2
		3	65	2
		4	55	2
S231T290-1041		2	10C	1
		2	10E	1
		2	10F	1
		3	30	1
		4	20B	1
		4	20D	1
		4	20	1
S231T290-2041		2	10	1
		4	20	1
S231T290-3041		2	10B	1
		2	10D	1
		2	10P	1
		4	20A	1
		4	20C	1
		4	20	1
S231T290-4041		2	10G	
		2	10H	
		2	10L	1
		2	10M	1
		2	10N	1
		2	10Q	1
		3	30A	1
		3	30C	1
		3	30D	1
		3	30E	1
		4	20F	1
		4	20G	1
		4	20H	1
		S231T290-5041		2
2	10J			1
2	10K			1
2	10R			1
3	32			
3	30B			1
3	30F			1
4	20E			1
4	20J			1
2	15			1
S231T290-802		4	25	1

33-51-03

ILLUSTRATED PARTS LIST

01.1

Page 1009

Jul 01/03

PART NUMBER	AIRLINE PART NO.	FIG.	ITEM	TTL REQ
S231T290-812		2	15A	1
		2	15B	1
		4	25A	1
S231T290-822		2	15E	1
		2	15F	1
		3	35	1
		4	25B	1
		4	25C	1
S231T290-823		3	35A	1
S231T300-1113		2	5A	1
		2	5D	1
		3	25	1
		4	15	1
S231T300-2113		2	5C	1
		2	5G	1
		3	25A	1
		3	25B	1
		4	15A	1
		4	15B	1
S233T100-1077		3	5	
		3	5A	
		3	5B	1
		3	5B	1
		4	5A	1
		4	5A	1
S233T100-1103		3	15	
		3	15A	1
		3	15A	1
		4	5B	1
		4	5B	1
S233T100-6022		4	5	1
		4	5	1
S233T100-6065		3	10	1
233T3100-134		1	3G	RF
233T3100-225		4	1F	RF
		1	3H	RF
233T3100-236		4	1G	RF
		1	3J	RF
233T3100-289		4	1H	RF
		1	3K	RF
233T3100-301		4	1J	RF
		1	3L	RF
233T3100-329		4	1K	RF
		1	3M	RF
233T3100-415		4	1L	RF
		1	3N	RF
		4	1M	RF

33-51-03

 ILLUSTRATED PARTS LIST
 01.1 Page 1010
 Jul 01/03


BOEING
 COMPONENT
 MAINTENANCE MANUAL

PART NUMBER	AIRLINE PART NO.	FIG.	ITEM	TTL REQ
233T3100-86		1	3F	RF
		4	1E	RF
233T3210-1		1	1	
233T3210-1022		1	2H	RF
		2	1N	RF
		4	10F	1
233T3210-1024		1	2J	RF
		2	1P	RF
233T3210-1025		1	2K	RF
		2	1Q	RF
		4	10G	1
233T3210-1027		1	2L	RF
		2	1R	RF
		4	10H	1
233T3210-1028		1	2M	RF
		2	1S	RF
		3	20H	1
233T3210-1029		1	2N	RF
		2	1T	RF
		3	20J	1
233T3210-1030		1	2Z	RF
		2	1Y	RF
233T3210-1031		1	2P	RF
		2	1U	RF
		3	20L	1
233T3210-1033		1	2Q	RF
		2	1V	RF
		3	20M	1
		4	10J	1
233T3210-1037		1	2R	RF
		2	1W	RF
		3	20N	1
233T3210-1038		1	2S	RF
		2	1X	RF
		3	20K	1
233T3210-11		1	1B	
233T3210-12		1	1C	
233T3210-1300		1	2T	RF
		3	1J	RF
233T3210-1301		1	2U	RF
		3	1K	RF
233T3210-1302		1	2V	RF
		3	1L	RF
233T3210-1303		1	2W	RF
		3	1M	RF
233T3210-1304		1	2X	RF
		3	1N	RF

33-51-03

ILLUSTRATED PARTS LIST

01.1

Page 1011

Jul 01/03

PART NUMBER	AIRLINE PART NO.	FIG.	ITEM	TTL REQ
233T3210-1305		1	2Y	RF
		3	1P	RF
233T3210-1306		1	3A	RF
		4	1	RF
233T3210-1307		1	3B	RF
		4	1A	RF
233T3210-1308		1	3C	RF
		4	1B	RF
233T3210-1309		1	3D	RF
		4	1C	RF
233T3210-1310		1	3E	RF
		4	1D	RF
233T3210-17		2	35	1
		3	55	1
		4	45	1
233T3210-19		1	1D	
233T3210-21		1	1F	
233T3210-22		1	1E	RF
		2	1	RF
		4	10	1
233T3210-23		2	120	1
		3	130	1
		4	120	1
233T3210-24		1	1G	RF
		2	1A	RF
233T3210-25		1	1H	RF
		2	1B	RF
		4	10A	1
233T3210-26		1	1J	
		2	1C	
233T3210-27		1	1K	RF
		2	1D	RF
		4	10B	1
233T3210-28		1	1L	RF
		2	1E	RF
		3	20	1
233T3210-29		1	1M	RF
		2	1F	RF
		3	20A	1
233T3210-30		1	1N	RF
		2	1G	RF
233T3210-300		1	2	RF
		3	1A	RF
233T3210-301		1	2A	RF
		3	1B	RF
233T3210-302		1	2B	RF
		3	1C	RF

33-51-03

 ILLUSTRATED PARTS LIST
 01.1 Page 1012
 Jul 01/03


BOEING
 COMPONENT
 MAINTENANCE MANUAL

PART NUMBER	AIRLINE PART NO.	FIG.	ITEM	TTL REQ
233T3210-303		1	2C	RF
		3	1D	RF
233T3210-304		1	2D	RF
		3	1E	RF
233T3210-305		1	2E	RF
		3	1F	RF
233T3210-306		1	2F	RF
		3	1G	RF
233T3210-307		1	2G	RF
		3	1H	RF
233T3210-31		1	1P	RF
		2	1H	RF
		3	20C	1
		4	10C	1
233T3210-33		1	1R	RF
		2	1J	RF
		3	20D	1
		4	10D	1
233T3210-35		1	1S	
		1	1T	
		2	1K	
233T3210-36		2	32	
233T3210-37		1	1U	RF
		2	1L	RF
		3	20E	1
		4	10E	1
233T3210-38		1	1V	RF
		2	1M	RF
		3	20B	1
233T3210-39		2	13	
		3	33	
233T3210-40		3	31	
233T3210-42		3	20F	1
233T3210-43		3	20G	1
233T3210-6		1	1A	
233T6200-82		2	110	1
		3	120	1
		4	110	1
293162		2	65	4
		3	85	4
		4	75	4
400-100-003		2	15C	
		2	15D	
402-112		2	25	1
		3	45	1
		4	35	1

33-51-03

 ILLUSTRATED PARTS LIST
 01.1 Page 1013
 Jul 01/03

PART NUMBER	AIRLINE PART NO.	FIG.	ITEM	TTL REQ		
433-100-003		2	15E	1		
		2	15F	1		
		3	35	1		
		4	25B	1		
		4	25C	1		
433-100-004		3	35A	1		
433-673-1001-1041		2	11	1		
		2	10C	1		
		2	10E	1		
		2	10F	1		
		2	10T	1		
		3	30	1		
		3	30L	1		
		4	20B	1		
		4	20D	1		
		4	20L	1		
		433-673-1004-4041		2	10L	1
				2	10M	1
				2	10N	1
				2	10Q	1
				2	10U	1
2	10Y			1		
2	11A			1		
2	11B			1		
3	30A			1		
3	30C			1		
3	30D			1		
3	30E			1		
3	30J			1		
3	30M			1		
3	30N			1		
434-674-1005-1113		4	20F	1		
		4	20G	1		
		4	20H	1		
		4	20M	1		
		4	20R	1		
		3	30H	1		
		2	5A	1		
		2	5D	1		
		3	25	1		
		4	15	1		
434-674-1031-2113		2	5C	1		
		2	5G	1		
		3	25A	1		
		3	25B	1		
		4	15A	1		
		4	15B	1		

33-51-03

ILLUSTRATED PARTS LIST

01.1

Page 1014

Jul 01/03


BOEING
 COMPONENT
 MAINTENANCE MANUAL

PART NUMBER	AIRLINE PART NO.	FIG.	ITEM	TTL REQ
4443B9		2	95	10
		3	105	10
		4	95	10
68AT34-1		2	20	1
		3	40	1
		4	30	1
68AT34-1A		2	20A	1
		3	40A	1
		4	30A	1
69B46200-10		2	115	3
		3	125	3
		4	115	3
800-000121-1		3	50A	1
800-000437		3	15A	1
800-000912		4	5B	1
		3	5B	1
		4	5A	1
800-003456		4	5	1
800000121-1		2	30	1
		3	50	1
		4	40	1
851-30768-1041		2	10A	

33-51-03

 ILLUSTRATED PARTS LIST
 01.1 Page 1015
 Jul 01/03

PART NUMBER	AIRLINE PART NO.	FIG.	ITEM	TTL REQ	
851-30768-2041		2	10	1	
		2	11	1	
		2	10C	1	
		2	10E	1	
		2	10F	1	
		2	10L	1	
		2	10M	1	
		2	10N	1	
		2	10T	1	
		2	10U	1	
		2	10V	1	
		2	10Y	1	
		2	11A	1	
		2	11B	1	
		3	30J	1	
		3	30L	1	
		3	30M	1	
		3	30N	1	
		4	20	1	
		4	20B	1	
		4	20D	1	
		4	20F	1	
		4	20G	1	
		4	20L	1	
		4	20M	1	
		4	20N	1	
		4	20R	1	
	851-30768-3041		2	10B	1
			2	10D	1
			2	10P	1
			2	10W	1
			4	20A	1
851-30768-3041,		4	20C	1	
		4	20P	1	
		2	11	1	
		2	10T	1	
		2	10U	1	
		2	10Y	1	
		2	11A	1	
		2	11B	1	
		3	30J	1	
		3	30L	1	
		3	30M	1	
		3	30N	1	
	4	20L	1		
	4	20M	1		
	4	20R	1		

33-51-03

ILLUSTRATED PARTS LIST

01.1

Page 1016

Jul 01/03


BOEING
 COMPONENT
 MAINTENANCE MANUAL

PART NUMBER	AIRLINE PART NO.	FIG.	ITEM	TTL REQ
851-30768-802		2	15	1
		4	25	1
851-30768-812		2	15A	1
		2	15B	1
		4	25A	1
		2	11	1
851-35100-5041		2	10S	1
		2	10T	1
		2	10U	1
		2	10X	1
		2	10Y	1
		2	10Z	1
		2	11A	1
		2	11B	1
		2	12A	1
		3	30G	1
		3	30J	1
		3	30K	1
		3	30L	1
		3	30M	1
		3	30N	1
		3	32A	1
		4	20K	1
		4	20L	1
		4	20M	1
		4	20Q	1
		4	20R	1
		4	20S	1

33-51-03

ILLUSTRATED PARTS LIST

01.1

Page 1017

Jul 01/03

Not Used
Figure 1

33-51-03

ILLUSTRATED PARTS LIST
01.101 Page 1018
Jul 01/03


BOEING
 COMPONENT
 MAINTENANCE MANUAL

FIG. & ITEM	PART NO.	AIRLINE PART NUMBER	NOMENCLATURE 1234567	EFF CODE	QTY PER ASSY
01-					
-1	233T3210-1		DELETED		
-1A	233T3210-6		DELETED		
-1B	233T3210-11		DELETED		
-1C	233T3210-12		DELETED		
-1D	233T3210-19		DELETED		
-1E	233T3210-22		PANEL ASSY-M43 EMER LIGHTS (FOR DETAILS SEE FIG. 2) (PRE SB 233T3210-33-01)	A	RF
-1F	233T3210-21		DELETED		
-1G	233T3210-24		PANEL ASSY-M43 EMER LIGHTS (PRE SB 233T3210-33-01) (FOR DETAILS SEE FIG. 2)	B	RF
-1H	233T3210-25		PANEL ASSY-M43 EMER LIGHTS (PRE SB 233T3210-33-01) (FOR DETAILS SEE FIG. 2)	C	RF
-1J	233T3210-26		DELETED		
-1K	233T3210-27		PANEL ASSY-M43 EMER LIGHTS (PRE SB 233T3210-33-01) (FOR DETAILS SEE FIG. 2)	D	RF
-1L	233T3210-28		PANEL ASSY-M43 EMER LIGHTS (PRE SB 233T3210-33-01) (FOR DETAILS SEE FIG. 2)	E	RF
-1M	233T3210-29		PANEL ASSY-M43 EMER LIGHTS (PRE SB 233T3210-33-01) (FOR DETAILS SEE FIG. 2)	F	RF
-1N	233T3210-30		PANEL ASSY-M43 EMER LIGHTS (PRE SB 233T3210-33-01 R1) (FOR DETAILS SEE FIG. 2)	G	RF
-1P	233T3210-31		PANEL ASSY-M43 EMER LIGHTS (PRE SB 233T3210-33-01) (FOR DETAILS SEE FIG. 2)	H	RF
-1R	233T3210-33		PANEL ASSY-M43 EMER LIGHTS (PRE SB 233T3210-33-01) (FOR DETAILS SEE FIG. 2)	J	RF
-1S	233T3210-35		DELETED		
-1T	233T3210-35		DELETED		
-1U	233T3210-37		PANEL ASSY-M43 EMER LIGHTS (PRE SB 233T3210-33-01) (FOR DETAILS SEE FIG. 2)	L	RF
-1V	233T3210-38		PANEL ASSY-M43 EMER LIGHTS (PRE SB 233T3210-33-01) (FOR DETAILS SEE FIG. 2)	M	RF

33-51-03

ILLUSTRATED PARTS LIST

01.1

Page 1019

Jul 01/03

FIG. & ITEM	PART NO.	AIRLINE PART NUMBER	NOMENCLATURE	EFF CODE	QTY PER ASSY
01-2	233T3210-300		1234567 PANEL ASSY-M43 EMER LIGHTS (PRE SB 233T3210-33-01) (FOR DETAILS SEE FIG. 3)	N	RF

33-51-03

ILLUSTRATED PARTS LIST
 01.101 Page 1020
 Jul 01/03


BOEING
 COMPONENT
 MAINTENANCE MANUAL

FIG. & ITEM	PART NO.	AIRLINE PART NUMBER	NOMENCLATURE 1234567	EFF CODE	QTY PER ASSY
01- -2A	233T3210-301		PANEL ASSY-M43 EMER LIGHTS (PRE SB 233T3210-33-01) (FOR DETAILS SEE FIG. 3)	P	RF
-2B	233T3210-302		PANEL ASSY-M43 EMER LIGHTS (PRE SB 233T3210-33-01) (FOR DETAILS SEE FIG. 3)	Q	RF
-2C	233T3210-303		PANEL ASSY-M43 EMER LIGHTS (PRE SB 233T3210-33-01) (FOR DETAILS SEE FIG. 3)	R	RF
-2D	233T3210-304		PANEL ASSY-M43 EMER LIGHTS (PRE SB 233T3210-33-01) (FOR DETAILS SEE FIG. 3)	S	RF
-2E	233T3210-305		PANEL ASSY-M43 EMER LIGHTS (PRE SB 233T3210-33-01) (FOR DETAILS SEE FIG. 3)	T	RF
R -2F	233T3210-306		PANEL ASSY-M43 EMER LIGHTS (FOR DETAILS SEE FIG. 3)	U	RF
R -2G	233T3210-307		PANEL ASSY-M43 EMER LIGHTS (FOR DETAILS SEE FIG. 3)	V	RF
R -2H	233T3210-1022		PANEL ASSY-M43 EMER LIGHTS (POST SB 233T3210-33-01) (FOR DETAILS SEE FIG. 2)	W	RF
R -2J	233T3210-1024		PANEL ASSY-M43 EMER LIGHTS (POST SB 233T3210-33-01) (FOR DETAILS SEE FIG. 2)	X	RF
R -2K	233T3210-1025		PANEL ASSY-M43 EMER LIGHTS (POST SB 233T3210-33-01) (FOR DETAILS SEE FIG. 2)	Y	RF
R -2L	233T3210-1027		PANEL ASSY-M43 EMER LIGHTS (POST SB 233T3210-33-01) (FOR DETAILS SEE FIG. 2)	Z	RF
R -2M	233T3210-1028		PANEL ASSY-M43 EMER LIGHTS (POST SB 233T3210-33-01) (FOR DETAILS SEE FIG. 2)	AA	RF
R -2N	233T3210-1029		PANEL ASSY-M43 EMER LIGHTS (POST SB 233T3210-33-01) (FOR DETAILS SEE FIG. 2)	AB	RF
R -2P	233T3210-1031		PANEL ASSY-M43 EMER LIGHTS (POST SB 233T3210-33-01) (FOR DETAILS SEE FIG. 2)	AC	RF
R -2Q	233T3210-1033		PANEL ASSY-M43 EMER LIGHTS (POST SB 233T3210-33-01) (FOR DETAILS SEE FIG. 2)	AD	RF

33-51-03

 ILLUSTRATED PARTS LIST
 01.101 Page 1021
 Jul 01/03

FIG. & ITEM	PART NO.	AIRLINE PART NUMBER	NOMENCLATURE 1234567	EFF CODE	QTY PER ASSY
R 01- -2R	233T3210-1037		PANEL ASSY-M43 EMER LIGHTS (POST SB 233T3210-33-01) (FOR DETAILS SEE FIG. 2)	AE	RF
R -2S	233T3210-1038		PANEL ASSY-M43 EMER LIGHTS (POST SB 233T3210-33-01) (FOR DETAILS SEE FIG. 2)	AF	RF
R -2T	233T3210-1300		PANEL ASSY-M43 EMER LIGHTS (POST SB 233T3210-33-01) (FOR DETAILS SEE FIG. 3)	AG	RF
R -2U	233T3210-1301		PANEL ASSY-M43 EMER LIGHTS (POST SB 233T3210-33-01) (FOR DETAILS SEE FIG. 3)	AH	RF
R -2V	233T3210-1302		PANEL ASSY-M43 EMER LIGHTS (POST SB 233T3210-33-01) (FOR DETAILS SEE FIG. 3)	AJ	RF
R -2W	233T3210-1303		PANEL ASSY-M43 EMER LIGHTS (POST SB 233T3210-33-01) (FOR DETAILS SEE FIG. 3)	AK	RF
R -2X	233T3210-1304		PANEL ASSY-M43 EMER LIGHTS (POST SB 233T3210-33-01) (FOR DETAILS SEE FIG. 3)	AL	RF
R -2Y	233T3210-1305		PANEL ASSY-M43 EMER LIGHTS (POST SB 233T3210-33-01) (FOR DETAILS SEE FIG. 3)	AM	RF
-2Z	233T3210-1030		PANEL ASSY-M43 EMER LIGHTS (POST SB 233T3210-33-01 R1) (FOR DETAILS SEE FIG. 2)	AN	RF
-3A	233T3210-1306		PANEL ASSY-M43 EMER LIGHTS (POST SB 233T3210-33-01 R1) (FOR DETAILS SEE FIG. 4)	AP	RF
-3B	233T3210-1307		PANEL ASSY-M43 EMER LIGHTS (POST SB 233T3210-33-01 R1) (FOR DETAILS SEE FIG. 4)	AQ	RF
-3C	233T3210-1308		PANEL ASSY-M43 EMER LIGHTS (POST SB 233T3210-33-01 R1) (FOR DETAILS SEE FIG. 4)	AR	RF

33-51-03

 ILLUSTRATED PARTS LIST
 01.1 Page 1022
 Jul 01/03


BOEING
 COMPONENT
 MAINTENANCE MANUAL

FIG. & ITEM	PART NO.	AIRLINE PART NUMBER	NOMENCLATURE 1234567	EFF CODE	QTY PER ASSY
01- -3D	233T3210-1309		PANEL ASSY-M43 EMER LIGHTS (POST SB 233T3210-33-01 R1) (FOR DETAILS SEE FIG. 4)	AS	RF
-3E	233T3210-1310		PANEL ASSY-M43 EMER LIGHTS (POST SB 233T3210-33-01 R1) (FOR DETAILS SEE FIG. 4)	AT	RF
-3F	233T3100-86		PANEL ASSY-M43 EMER LIGHTS (PRE SB 233T3210-33-01 R1) (FOR DETAILS SEE FIG. 4)	AU	RF
-3G	233T3100-134		PANEL ASSY-M43 EMER LIGHTS (PRE SB 233T3210-33-01 R1) (FOR DETAILS SEE FIG. 4)	AV	RF
-3H	233T3100-225		PANEL ASSY-M43 EMER LIGHTS (PRE SB 233T3210-33-01 R1) (FOR DETAILS SEE FIG. 4)	AW	RF
-3J	233T3100-236		PANEL ASSY-M43 EMER LIGHTS (PRE SB 233T3210-33-01 R1) (FOR DETAILS SEE FIG. 4)	AX	RF
-3K	233T3100-289		PANEL ASSY-M43 EMER LIGHTS (PRE SB 233T3210-33-01 R1) (FOR DETAILS SEE FIG. 4)	AY	RF
-3L	233T3100-301		PANEL ASSY-M43 EMER LIGHTS (PRE SB 233T3210-33-01 R1) (FOR DETAILS SEE FIG. 4)	AZ	RF

33-51-03

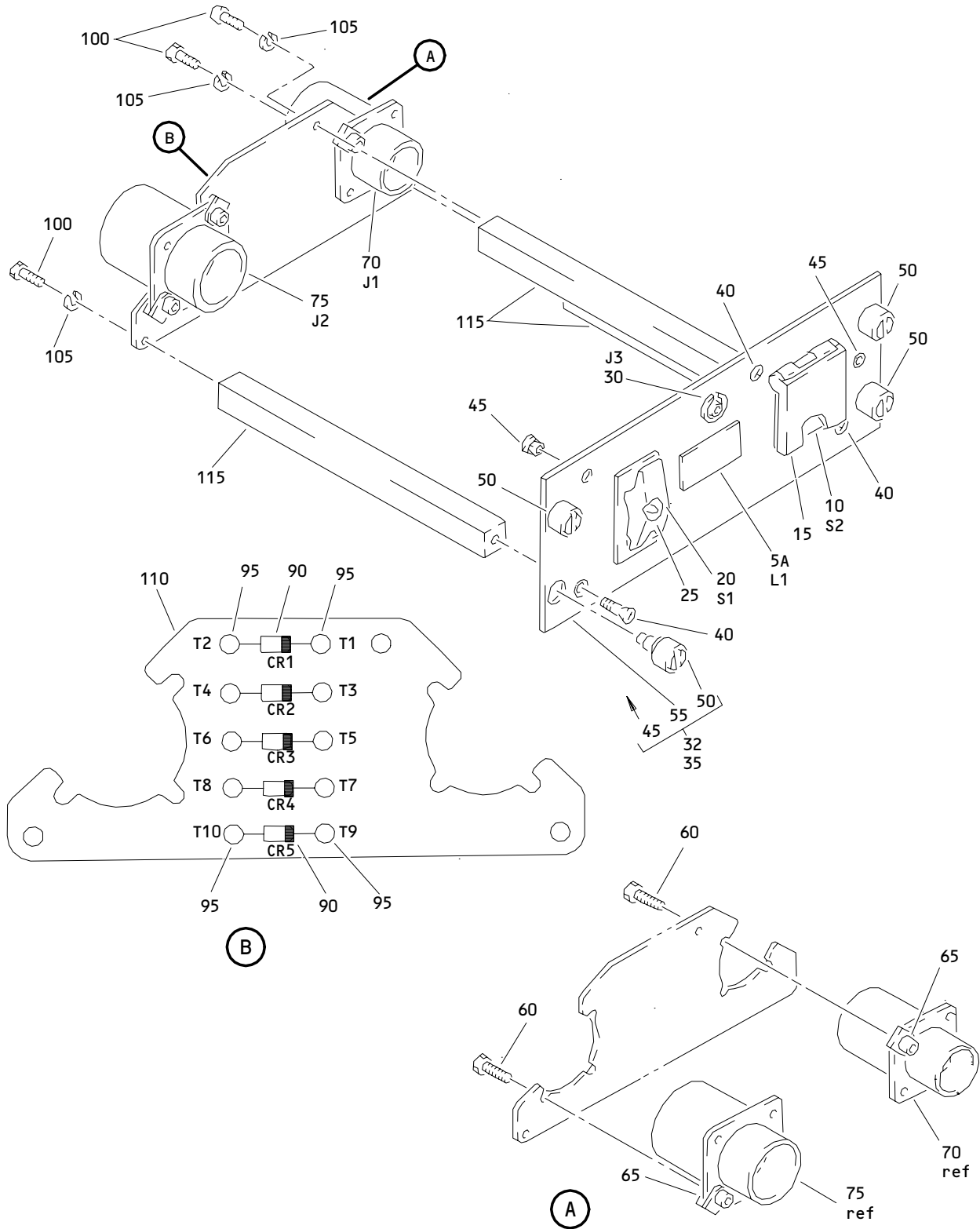
 ILLUSTRATED PARTS LIST
 01.1 Page 1023
 Jul 01/03

FIG. & ITEM	PART NO.	AIRLINE PART NUMBER	NOMENCLATURE 1234567	EFF CODE	QTY PER ASSY
01- -3M	233T3100-329		PANEL ASSY-M43 EMER LIGHTS (PRE SB 233T3210-33-01 R1) (FOR DETAILS SEE FIG. 4)	BA	RF
-3N	233T3100-415		PANEL ASSY-M43 EMER LIGHTS (PRE SB 233T3210-33-01 R1) (FOR DETAILS SEE FIG. 4)	BB	RF

- Item Not Illustrated

33-51-03

ILLUSTRATED PARTS LIST
 01.1 Page 1024
 Jul 01/03



Emergency Lights M43 Panel Assembly
 Figure 2

33-51-03

ILLUSTRATED PARTS LIST
 01.101 Page 1026
 Jul 01/03


BOEING
 COMPONENT
 MAINTENANCE MANUAL

FIG. & ITEM	PART NO.	AIRLINE PART NUMBER	NOMENCLATURE 1234567	EFF CODE	QTY PER ASSY
02- -1	233T3210-22		PANEL ASSY-M43 EMER LIGHTS (PRE SB 233T3210-33-01)	A	RF
-1A	233T3210-24		PANEL ASSY-M43 EMER LIGHTS (PRE SB 233T3210-33-01)	B	RF
-1B	233T3210-25		PANEL ASSY-M43 EMER LIGHTS (PRE SB 233T3210-33-01)	C	RF
-1C	233T3210-26		DELETED		
-1D	233T3210-27		PANEL ASSY-M43 EMER LIGHTS (PRE SB 233T3210-33-01)	D	RF
-1E	233T3210-28		PANEL ASSY-M43 EMER LIGHTS (PRE SB 233T3210-33-01)	E	RF
-1F	233T3210-29		PANEL ASSY-M43 EMER LIGHTS (PRE SB 233T3210-33-01)	F	RF
-1G	233T3210-30		PANEL ASSY-M43 EMER LIGHTS (PRE SB 233T3210-33-01 R1)	G	RF
-1H	233T3210-31		PANEL ASSY-M43 EMER LIGHTS (PRE SB 233T3210-33-01)	H	RF
-1J	233T3210-33		PANEL ASSY-M43 EMER LIGHTS (PRE SB 233T3210-33-01)	J	RF
-1K	233T3210-35		DELETED		
-1L	233T3210-37		PANEL ASSY-M43 EMER LIGHTS (PRE SB 233T3210-33-01)	L	RF
-1M	233T3210-38		PANEL ASSY-M43 EMER LIGHTS (PRE SB 233T3210-33-01)	M	RF
R -1N	233T3210-1022		PANEL ASSY-M43 EMER LIGHTS (POST SB 233T3210-33-01)	W	RF
R -1P	233T3210-1024		PANEL ASSY-M43 EMER LIGHTS (POST SB 233T3210-33-01)	X	RF
R -1Q	233T3210-1025		PANEL ASSY-M43 EMER LIGHTS (POST SB 233T3210-33-01)	Y	RF
R -1R	233T3210-1027		PANEL ASSY-M43 EMER LIGHTS (POST SB 233T3210-33-01)	Z	RF
R -1S	233T3210-1028		PANEL ASSY-M43 EMER LIGHTS (POST SB 233T3210-33-01)	AA	RF
R -1T	233T3210-1029		PANEL ASSY-M43 EMER LIGHTS (POST SB 233T3210-33-01)	AB	RF
R -1U	233T3210-1031		PANEL ASSY-M43 EMER LIGHTS (POST SB 233T3210-33-01)	AC	RF
R -1V	233T3210-1033		PANEL ASSY-M43 EMER LIGHTS (POST SB 233T3210-33-01)	AD	RF
R -1W	233T3210-1037		PANEL ASSY-M43 EMER LIGHTS (POST SB 233T3210-33-01)	AE	RF
R -1X	233T3210-1038		PANEL ASSY-M43 EMER LIGHTS (POST SB 233T3210-33-01)	AF	RF

33-51-03

 ILLUSTRATED PARTS LIST
 01.1 Page 1027
 Jul 01/03

FIG. & ITEM	PART NO.	AIRLINE PART NUMBER	NOMENCLATURE 1234567	EFF CODE	QTY PER ASSY
02- -1Y	233T3210-1030		PANEL ASSY-M43 EMER LIGHTS (POST SB 233T3210-33-01 R1)	AN	RF
5 5A	BCREF6106 BCREF6199		DELETED .LIGHT ASSY-UNARMED IND (V81590) (L1) (434-674-1005-1113) (SPEC S231T300-1113) (OPT ITEM 5C)	A,C-J ,M,W, Y-AD, AF,AN	1
5B -5C	BCREF8438 BCREF8550		DELETED .LIGHT ASSY-UNARMED IND (V81590) (434-674-1031-2113) (L1) (SPEC S231T300-2113) (OPT ITEM 5A)	A,C-J ,M,W, Y-AD, AF,AN	1
-5D	BCREF6199		.LIGHT ASSY-UNARMED IND (V81590) (L1) (434-674-1005-1113) (SPEC S231T300-1113)	B,X	1
-5E	BCREF8550		DELETED		
-5F	BCREF6199		DELETED		
-5G	BCREF8550		.LIGHT ASSY-UNARMED IND (V81590) (434-674-1031-2113) (L1) (SPEC S231T300-2113)	L,AE	1

33-51-03

 ILLUSTRATED PARTS LIST
 01.1 Page 1028
 Jul 01/03


BOEING
 COMPONENT
 MAINTENANCE MANUAL

FIG. & ITEM	PART NO.	AIRLINE PART NUMBER	NOMENCLATURE 1234567	EFF CODE	QTY PER ASSY
02-10	851-30768-2041		.SWITCH-LIGHTED PUSH BUTTON IND (ON) (V96182) (S2) (SPEC S231T290-2041) (851-30768-2041 TOGETHER WITH 851-30768-802 -812 OR 433-100-003 SWITCHGUARD I/W BCREFA0518 OR S231T290-5041 TOGETHER WITH 433-100-003) (OPT ITEMS 10B, 10C)	A,C	1
-10A	851-30768-1041		DELETED		
-10B	851-30768-3041		.SWITCH-LIGHTED PUSH BUTTON IND (ON) (V96182) (S2) (SPEC S231T290-3041) (851-30768-2041 TOGETHER WITH 851-30768-802 OR -812 OR 433-100-003 SWITCHGUARD I/W BCREFA0518 OR S231T290-5041 TOGETHER WITH 433-100-003) (OPT ITEMS 10, 10C)	A,C	1
-10C	BCREFA0518		.SWITCH-LIGHTED PUSH BUTTON IND (ON) (V81590) (433-673-1001-1041) (S2) (SPEC S231T290-1041) (851-30768-2041 TOGETHER WITH 851-30768-802 OR -812 OR 433-100-003 SWITCHGUARD I/W BCREFA0518 OR 851-30768-3041 TOGETHER WITH 433-100-003 SWITCHGUARD) (OPT ITEMS 10, 10B)	A,C	1

33-51-03

 ILLUSTRATED PARTS LIST
 01.101 Page 1029
 Jul 01/03

FIG. & ITEM	PART NO.	AIRLINE PART NUMBER	NOMENCLATURE 1234567	EFF CODE	QTY PER ASSY
02- -10D	851-30768-3041		.SWITCH-LIGHTED PUSH BUTTON IND (ON) (V96182) (S2) (SPEC S231T290-3041) (851-30768-2041 TOGETHER WITH 851-30768-802 OR -812 OR 433-100-003 SWITCHGUARD I/W BCREF7618 851-30768-3041 BCREFA0518 OR S231T290-5041 TOGETHER WITH 433-100-003) (OPT ITEM 10E)	B,D	1
-10E	BCREF7618		.SWITCH-LIGHTED PUSH BUTTON IND (ON) (V81590) (433-673-1001-1041) (S2) (SPEC S231T290-1041) (851-30768-2041 TOGETHER WITH 851-30768-802 OR -812 OR 433-100-003 SWITCHGUARD I/W BCREF7618 OR 851-30768-3041 TOGETHER WITH 433-100-003 SWITCHGUARD) (OPT ITEM 10D)	B,D	1

33-51-03

 ILLUSTRATED PARTS LIST
 01.101 Page 1030
 Jul 01/03

**COMPONENT
MAINTENANCE MANUAL**

FIG. & ITEM	PART NO.	AIRLINE PART NUMBER	NOMENCLATURE	EFF CODE	QTY PER ASSY
02- -10L	BCREFA0518		.SWITCH-LIGHTED PUSH BUTTON IND (ON) (V81590) (433-673-1004-4041) (S2) (SPEC S231T290-4041) (851-30768-2041 TOGETHER WITH 851-30768-802 -812 OR 433-100-003 SWITCHGUARD I/W BCREF7618 851-30768-3041 BCREFA0518 OR S231T290-5041 TOGETHER WITH 433-100-003) (OPT ITEM 10F)	F	1
-10M	BCREFA0518		.SWITCH-LIGHTED PUSH BUTTON IND (ON) (V81590) (433-673-1004-4041) (S2) (SPEC S231T290-4041) (851-30768-2041 TOGETHER WITH 851-30768-802 -812 OR 433-100-003 SWITCHGUARD I/W BCREF7618 851-30768-3041 BCREFA0518 OR S231T290-5041 TOGETHER WITH 433-100-003) (OPT ITEM 10J)	E,L,M	1

33-51-03

ILLUSTRATED PARTS LIST

01.101

Page 1032

Jul 01/03


BOEING
 COMPONENT
 MAINTENANCE MANUAL

FIG. & ITEM	PART NO.	AIRLINE PART NUMBER	NOMENCLATURE 1234567	EFF CODE	QTY PER ASSY
02- -10N	BCREFA0518		.SWITCH-LIGHTED PUSH BUTTON IND (ON) (V81590) (433-673-1004-4041) (S2) (SPEC S231T290-4041) (851-30768-2041 TOGETHER WITH 851-30768-802 -812 OR 433-100-003 SWITCHGUARD I/W BCREF7618 851-30768-3041 BCREFA0518 OR S231T290-5041 TOGETHER WITH 433-100-003)	H	1
-10P	851-30768-3041		.SWITCH-LIGHTED PUSH BUTTON (V96182) (S2) (SPEC S231T290-3041) (OPT ITEM 10K)	G,AN	1
-10Q	BCREFA0518		.SWITCH-LIGHTED PUSHBUTTON IND (ON) (V81590) (433-673-1004-4041) (S2) (SPEC S231T290-4041) (OPT ITEMS 10R, 10S)	J	1
-10R	S231T290-5041		.SWITCH-LIGHTED PUSHBUTTON IND (ON) (S2) (OPT ITEMS 10Q, 10S)	J	1
-10S	851-35100-5041		.SWITCH-LIGHTED PUSHBUTTON IND (ON) (V96182) (S2) (OPT ITEMS 10Q, 10R)	J	1

33-51-03

 ILLUSTRATED PARTS LIST
 01.1 Page 1033
 Jul 01/03

**COMPONENT
MAINTENANCE MANUAL**

FIG. & ITEM	PART NO.	AIRLINE PART NUMBER	NOMENCLATURE 1234567	EFF CODE	QTY PER ASSY
02- -10T	BCREF7618		.SWITCH-LIGHTED PUSH BUTTON IND (ON) (V81590) (433-673-1001-1041) (S2) (851-30768-2041 TOGETHER WITH 851-30768-802, OR -812, OR 433-100-003 SWITCHGUARD I/W BCREF7618, OR 851-30768-3041, OR BCREFA0518, OR 851-35100-5041 TOGETHER WITH 433-100-003 SWITCHGUARD) (SPEC S231T290-1041) (USE WITH CONFIG "D" MASTER MODULE. SEE REPAIR FOR ADDITIONAL INFORMATION) (OPT ITEMS 10U,10V,10W, 10X)	W-Z	1
-10U	BCREFA0518		.SWITCH-LIGHTED PUSH BUTTON IND (ON) (V81590) (433-673-1004-4041) (S2) (851-30768-2041 TOGETHER WITH 851-30768-802, OR -812, OR 433-100-003 SWITCHGUARD I/W BCREF7618, OR 851-30768-3041, OR BCREFA0518, OR 851-35100-5041 TOGETHER WITH 433-100-003 SWITCHGUARD) (SPEC S231T290-4041) (USE WITH CONFIG "D" MASTER MODULE. SEE REPAIR FOR ADDITIONAL INFORMATION) (OPT ITEMS 10T,10V,10W, 10X)	W-Z	1

33-51-03

ILLUSTRATED PARTS LIST

01.101

Page 1034

Jul 01/03


BOEING
 COMPONENT
 MAINTENANCE MANUAL

FIG. & ITEM	PART NO.	AIRLINE PART NUMBER	NOMENCLATURE 1234567	EFF CODE	QTY PER ASSY
02- -10V	851-30768-2041		.SWITCH-LIGHTED PUSH BUTTON IND (ON) (V81590) (S2) (851-30768-2041 TOGETHER WITH 851-30768-802, OR -812, OR 433-100-003 SWITCHGUARD I/W BCREF7618, OR 851-30768-3041, OR BCREFA0518, OR 851-35100-5041 TOGETHER WITH 433-100-003 SWITCHGUARD) (SPEC S231T290-2041) (OPT ITEMS 10T,10U,10W, 10X)	W-Z	1
-10W	851-30768-3041		.SWITCH-LIGHTED PUSH BUTTON IND (ON) (V81590) (S2) (851-30768-2041 TOGETHER WITH 851-30768-802, OR -812, OR 433-100-003 SWITCHGUARD I/W BCREF7618, OR 851-30768-3041, OR BCREFA0518, OR 851-35100-5041 TOGETHER WITH 433-100-003 SWITCHGUARD) (SPEC S231T290-3041) (OPT ITEMS 10T,10U,10V, 10X)	W-Z	1

33-51-03

 ILLUSTRATED PARTS LIST
 01.101 Page 1035
 Jul 01/03



COMPONENT
MAINTENANCE MANUAL

FIG. & ITEM	PART NO.	AIRLINE PART NUMBER	NOMENCLATURE	EFF CODE	QTY PER ASSY
02- -10X	851-35100-5041		.SWITCH-LIGHTED PUSH BUTTON IND (ON) (V81590) (S2) (851-30768-2041 TOGETHER WITH 851-30768-802, OR -812, OR 433-100-003 SWITCHGUARD I/W BCREF7618, OR 851-30768-3041, OR BCREFA0518, OR 851-35100-5041 TOGETHER WITH 433-100-003 SWITCHGUARD) (SPEC S231T290-2041) (OPT ITEMS 10T,10U,10V, 10W)	W-Z	1
-10Y	BCREFA0518		.SWITCH-LIGHTED PUSH BUTTON IND (ON) (V81590) (433-673-1004-4041) (S2) (851-30768-2041 TOGETHER WITH 851-30768-802, OR -812, OR 433-100-003 SWITCHGUARD I/W BCREF7618, OR 851-30768-3041, OR BCREFA0518, OR 851-35100-5041 TOGETHER WITH 433-100-003 SWITCHGUARD) (SPEC S231T290-4041) (USE WITH CONFIG "D" MASTER MODULE. SEE REPAIR FOR ADDITIONAL INFORMATION) (OPT ITEM 10Z)	AA, AD-AF	1

33-51-03


BOEING
 COMPONENT
 MAINTENANCE MANUAL

FIG. & ITEM	PART NO.	AIRLINE PART NUMBER	NOMENCLATURE 1234567	EFF CODE	QTY PER ASSY
02- -10Z	851-35100-5041		.SWITCH-LIGHTED PUSH BUTTON IND (ON) (V81590) (S2) (851-30768-2041 TOGETHER WITH 851-30768-802, OR -812, OR 433-100-003 SWITCHGUARD I/W BCREF7618, OR 851-30768-3041, OR BCREFA0518, OR 851-35100-5041 TOGETHER WITH 433-100-003 SWITCHGUARD) (SPEC S231T290-5041) (OPT ITEM 10Y)	AA, AD-AF	1
-11	BCREF7618		.SWITCH-LIGHTED PUSH BUTTON IND (ON) (V81590) (433-673-1001-1041) (S2) (851-30768-2041 TOGETHER WITH 851-30768-802, OR -812, OR 433-100-003 SWITCHGUARD I/W BCREF7618, OR 851-30768-3041, OR BCREFA0518, OR 851-35100-5041 TOGETHER WITH 433-100-003 SWITCHGUARD) (SPEC S231T290-1041) (USE WITH CONFIG "D" MASTER MODULE. SEE REPAIR FOR ADDITIONAL INFORMATION) (OPT ITEM 11A)	AB	1

33-51-03

 ILLUSTRATED PARTS LIST
 01.101 Page 1037
 Jul 01/03



COMPONENT
MAINTENANCE MANUAL

FIG. & ITEM	PART NO.	AIRLINE PART NUMBER	NOMENCLATURE 1234567	EFF CODE	QTY PER ASSY
02- -11A	BCREFA0518		.SWITCH-LIGHTED PUSH BUTTON IND (ON) (V81590) (433-673-1004-4041) (S2) (851-30768-2041 TOGETHER WITH 851-30768-802, OR -812, OR 433-100-003 SWITCHGUARD I/W BCREFA0518, OR 851-30768-3041, OR BCREFA0518, OR 851-35100-5041 TOGETHER WITH 433-100-003 SWITCHGUARD) (SPEC S231T290-4041) (USE WITH CONFIG "D" MASTER MODULE. SEE REPAIR FOR ADDITIONAL INFORMATION) (OPT ITEM 11)	AB	1
-11B	BCREFA0518		.SWITCH-LIGHTED PUSH BUTTON IND (ON) (V81590) (433-673-1004-4041) (S2) (851-30768-2041 TOGETHER WITH 851-30768-802, OR -812, OR 433-100-003 SWITCHGUARD I/W BCREFA0518, OR 851-30768-3041, OR BCREFA0518, OR 851-35100-5041 TOGETHER WITH 433-100-003 SWITCHGUARD) (SPEC S231T290-4041) (USE WITH CONFIG "D" MASTER MODULE. SEE REPAIR FOR ADDITIONAL INFORMATION)	AC	1

33-51-03


BOEING
 COMPONENT
 MAINTENANCE MANUAL

FIG. & ITEM	PART NO.	AIRLINE PART NUMBER	NOMENCLATURE 1234567	EFF CODE	QTY PER ASSY
02-12	S231T290-5041		DELETED		
-12A	851-35100-5041		DELETED		
-13	233T3210-39		DELETED		
-14	BCREFA0518		DELETED		
15	851-30768-802		. GUARD-SWITCH (V96182) (SPEC S231T290-802) (OPT ITEMS 15A, 15E)	A,W	1
-15A	851-30768-812		. GUARD-SWITCH (V96182) (SPEC S231T290-812) (OPT ITEMS 15, 15E)	A,W	1
-15B	851-30768-812		. GUARD-SWITCH (V96182) (SPEC S231T290-812)	B,X	1
-15C	400-100-003		DELETED		
-15D	400-100-003		DELETED		
-15E	433-100-003		. GUARD-SWITCH (V81590) (SPEC S231T290-822) (OPT ITEMS 15, 15A)	A,W	1
-15F	433-100-003		. GUARD-SWITCH (V81590) (SPEC S231T290-822)	C-J, L,M, Y-AF, AN	1
20	68AT34-1		. SWITCH-TOGGLE (V91929) (S1)	A-J, W-AD, AN	1
-20A	68AT34-1A		. SWITCH-TOGGLE (V91929) (S1)	L,M,A E,AF	1

33-51-03

 ILLUSTRATED PARTS LIST
 01.1 Page 1039
 Jul 01/03

FIG. & ITEM	PART NO.	AIRLINE PART NUMBER	NOMENCLATURE 1234567	EFF CODE	QTY PER ASSY
02-25	402-112		. GUARD- (V28277)	A-J, L,M, W-AF, AN	1
30	800000121-1		. CONNECTOR- (V05617) (J3)	A-J,L L,M, W-AF AN	1
32 35	233T3210-36 233T3210-17		DELETED . BASEPLATE ASSY	A-J, L,M, W-AF, AN	1
40	NAS514P632-5		. SCREW	A-J,M W-AD, AF,AN	3
-40A 45	NAS514P632-5P SF6G6CBB5D		. SCREW . .NUT- (V12324) (SPEC BACN10PA06-6)	L,AE A-J, L,M, W-AF, AN	3 2
50	DBMB1400-6A1		. .STUD ASSY- (V08524) (SPEC BACS21DD1B)	A-J, L,M, W-AF, AN	4
55	BACP10U0225N		. .BASEPLATE	A-J, L,M, W-AF, AN	1
60	NAS1801-04-5		. SCREW	A-J, L,M, W-AF, AN	4
65	K19798-04		.NUT- (V15653) (SPEC BACN10NW1) (OPT RMA4812-160-40 (V72962)) (OPT 293162 (V60119))	A-J, L,M, W-AF, AN	4

33-51-03

 ILLUSTRATED PARTS LIST
 01.1 Page 1040
 Jul 01/03


BOEING
 COMPONENT
 MAINTENANCE MANUAL

FIG. & ITEM	PART NO.	AIRLINE PART NUMBER	NOMENCLATURE 1234567	EFF CODE	QTY PER ASSY
02-70	BACC45FN12-12P7		.CONNECTOR- (J1)	A-J, L,M, W-AF, AN	1
75	BACC45FN16-24P		.CONNECTOR- (J2)	A-J, L,M, W-AF, AN	1
90	JANTX1N5618		.DIODE- (CR1-CR5)	A-J, L,M, W-AF, AN	5
95	4443B9		.TERMINAL-TEMP CONT PANEL (V88245) (T1-T10)	A-J, L,M, W-AF, AN	10
100	NAS1801-06-5		.SCREW	A-J, L,M, W-AF, AN	3
105	MS35338-41		.WASHER	A-J, L,M, W-AF, AN	3
110	233T6200-82		.BRACKET-SPRT	A-J, L,M, W-AF, AN	1
115	69B46200-10		.STANDOFF	A-J, L,M, W-AF, AN	3
-120	233T3210-23		.WIRE BUNDLE ASSY	A-J, L,M, W-AF, AN	1

- Item Not Illustrated

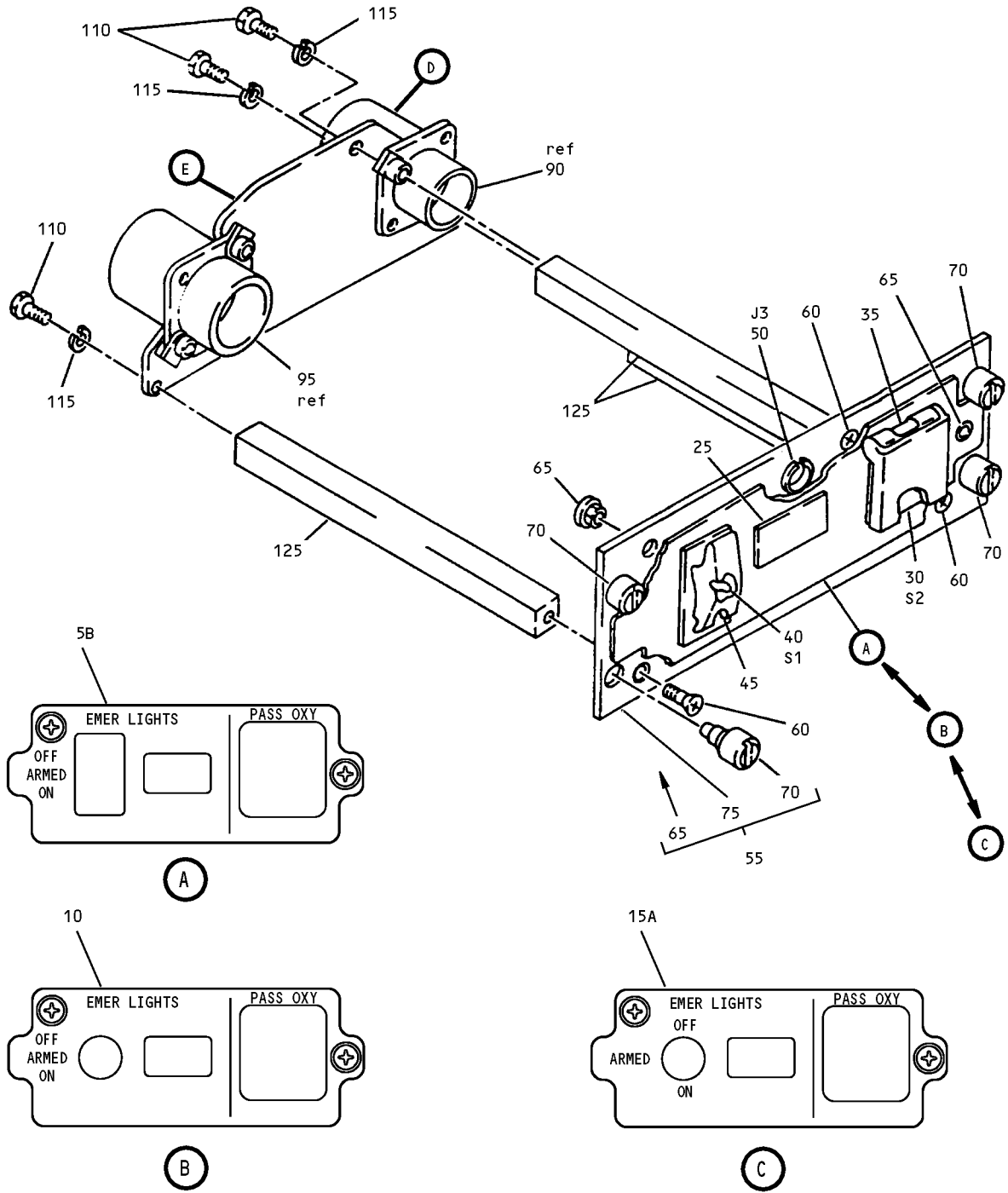
33-51-03

ILLUSTRATED PARTS LIST

01.1

Page 1041

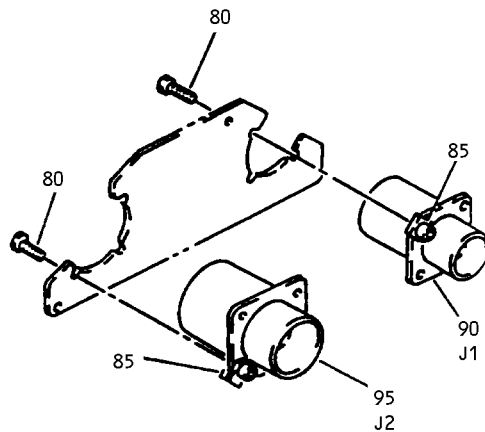
Jul 01/03



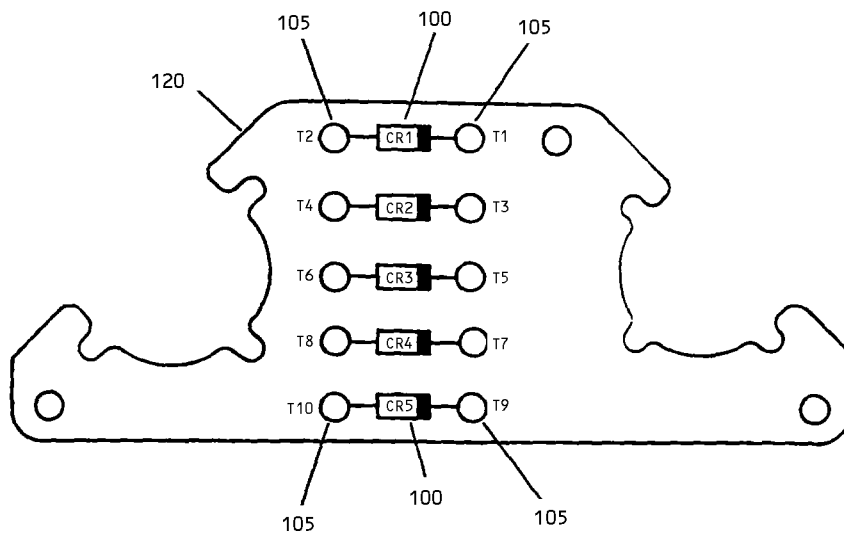
Emergency Lights Panels Assembly, M43
 Figure 3 (Sheet 1)

33-51-03

ILLUSTRATED PARTS LIST
 01.101 Page 1043
 Jul 01/03



(D)



(E)

Emergency Lights Panels Assembly, M43
 Figure 3 (Sheet 2)

33-51-03

ILLUSTRATED PARTS LIST
 01.101 Page 1044
 Jul 01/03


BOEING
 COMPONENT
 MAINTENANCE MANUAL

FIG. & ITEM	PART NO.	AIRLINE PART NUMBER	NOMENCLATURE 1234567	EFF CODE	QTY PER ASSY
03-					
-1A	233T3210-300		PANEL ASSY-M43 EMER LIGHTS (PRE SB 233T3210-33-01)	N	RF
-1B	233T3210-301		PANEL ASSY-M43 EMER LIGHTS (PRE SB 233T3210-33-01)	P	RF
-1C	233T3210-302		PANEL ASSY-M43 EMER LIGHTS (PRE SB 233T3210-33-01)	Q	RF
-1D	233T3210-303		PANEL ASSY-M43 EMER LIGHTS (PRE SB 233T3210-33-01)	R	RF
-1E	233T3210-304		PANEL ASSY-M43 EMER LIGHTS (PRE SB 233T3210-33-01)	S	RF
-1F	233T3210-305		PANEL ASSY-M43 EMER LIGHTS (PRE SB 233T3210-33-01)	T	RF
R -1G	233T3210-306		PANEL ASSY-M43 EMER LIGHTS	U	RF
R -1H	233T3210-307		PANEL ASSY-M43 EMER LIGHTS	V	RF
R -1J	233T3210-1300		PANEL ASSY-M43 EMER LIGHTS (POST SB 233T3210-33-01)	AG	RF
R -1K	233T3210-1301		PANEL ASSY-M43 EMER LIGHTS (POST SB 233T3210-33-01)	AH	RF
R -1L	233T3210-1302		PANEL ASSY-M43 EMER LIGHTS (POST SB 233T3210-33-01)	AJ	RF
R -1M	233T3210-1303		PANEL ASSY-M43 EMER LIGHTS (POST SB 233T3210-33-01)	AK	RF
R -1N	233T3210-1304		PANEL ASSY-M43 EMER LIGHTS (POST SB 233T3210-33-01)	AL	RF
R -1P	233T3210-1305		PANEL ASSY-M43 EMER LIGHTS (POST SB 233T3210-33-01)	AM	RF
5	S233T100-1077		DELETED		
-5A	S233T100-1077		DELETED		
R 5B	800-000912		.LIGHTPLATE- (V05617) (SPEC S233T100-1077) (OPT S233T100-1077 (V51896))	N,P,R ,S,U, AG,AH ,AK,A L	1
10	S233T100-6065		.LIGHTPLATE- (V51896) (SPEC S233T100-6065) (OPT (V05617), (V98140))	Q,AJ	1
15	S233T100-1103		DELETED		
R 15A	800-000437		.LIGHTPLATE- (V05617) (SPEC S233T100-1103) (OPT S233T100-1103 (V51896))	T,V,A M	1
20	233T3210-28		.PANEL ASSY	N,AG	1
-20A	233T3210-29		.PANEL ASSY	P,AH	1

33-51-03

 ILLUSTRATED PARTS LIST
 01.101 Page 1045
 Jul 01/03

FIG. & ITEM	PART NO.	AIRLINE PART NUMBER	NOMENCLATURE 1234567	EFF CODE	QTY PER ASSY
R R	03-				
	-20B	233T3210-38	.PANEL ASSY	Q,AJ	1
	-20C	233T3210-31	.PANEL ASSY	R,AK	1
	-20D	233T3210-33	.PANEL ASSY	S,AL	1
	-20E	233T3210-37	.PANEL ASSY	T,AM	1
	-20F	233T3210-42	.PANEL ASSY	U	1
	-20G	233T3210-43	.PANEL ASSY	V	1
	-20H	233T3210-1028	.PANEL ASSY	AG	1
	-20J	233T3210-1029	.PANEL ASSY	AH	1
	-20K	233T3210-1038	.PANEL ASSY	AJ	1
	-20L	233T3210-1031	.PANEL ASSY	AK	1
	-20M	233T3210-1033	.PANEL ASSY	AL	1
	-20N	233T3210-1037	.PANEL ASSY	AM	1
	25	BCREF6199	..LIGHT ASSY-UNARMED IND (V81590) (L1) (434-674-1005-1113) (SPEC S231T300-1113) (OPT ITEM 25A)	N-S,A G-AL	1
	-25A	BCREF8550	..LIGHT ASSY-UNARMED IND (V81590) (434-674-1031-2113) (L1) (SPEC S231T300-2113) (OPT ITEM 25)	N-S,A G-AL	1
	-25B	BCREF8550	..LIGHT ASSY-UNARMED IND (V81590) (434-674-1031-2113) (L1) (SPEC S231T300-2113)	T-V,A M	1
	30	BCREF7618	..SWITCH-LIGHTED PUSH BUTTON IND (ON) (V81590) (433-673-1001-1041) (S2) (SPEC S231T290-1041) (OPT ITEM 30A)	P	1
	-30A	BCREFA0518	..SWITCH-LIGHTED PUSH BUTTON IND (ON) (V81590) (433-673-1004-4041) (S2) (SPEC S231T290-4041) (OPT ITEM 30)	P	1

33-51-03

 ILLUSTRATED PARTS LIST
 01.101 Page 1046
 Jul 01/03


BOEING
 COMPONENT
 MAINTENANCE MANUAL

FIG. & ITEM	PART NO.	AIRLINE PART NUMBER	NOMENCLATURE 1234567	EFF CODE	QTY PER ASSY
03- -30B	S231T290-5041		..SWITCH-LIGHTED PUSH BUTTON IND (ON) (S2) (OPT ITEM 30C)	N,Q,T	1
-30C	BCREFA0518		..SWITCH-LIGHTED PUSH BUTTON IND (ON) (V81590) (433-673-1004-4041) (S2) (SPEC S231T290-4041) (OPT ITEM 30B)	N,Q,T	1
-30D	BCREFA0518		..SWITCH-LIGHTED PUSH BUTTON IND (ON) (V81590) (433-673-1004-4041) (S2) (SPEC S231T290-4041)	R	1
-30E	BCREFA0518		..SWITCH-LIGHTED PUSH BUTTON IND (ON) (V81590) (433-673-1004-4041) (S2) (OPT ITEMS 30F, 30G) (SPEC S231T290-4041)	S	1
R -30F	S231T290-5041		..SWITCH-LIGHTED PUSH BUTTON IND (ON) (S2) (OPT ITEMS 30E, 30G)	S	1
-30G	851-35100-5041		..SWITCH-LIGHTED PUSH BUTTON IND (ON) (V96182) (S2) (OPT ITEMS 30E, 30F)	S	1

33-51-03

 ILLUSTRATED PARTS LIST
 01.101 Page 1047
 Jul 01/03



COMPONENT
MAINTENANCE MANUAL

FIG. & ITEM	PART NO.	AIRLINE PART NUMBER	NOMENCLATURE 1234567	EFF CODE	QTY PER ASSY
R 03- -30H	4336731004-4241		..SWITCH-LIGHTED PUSH BUTTON IND (V81590) (S2)	U,V	1
-30J	BCREFA0518		..SWITCH-LIGHTED PUSH BUTTON IND (ON) (V81590) (433-673-1004-4041) (S2) (851-30768-2041 TOGETHER WITH 851-30768-802, OR -812, OR 433-100-003 SWITCHGUARD I/W BCREF7618, OR 851-30768-3041, OR BCREFA0518, OR 851-35100-5041 TOGETHER WITH 433-100-003 SWITCHGUARD) (SPEC S231T290-4041) (USE WITH CONFIG "D" MASTER MODULE. SEE REPAIR FOR ADDITIONAL INFORMATION) (OPT ITEM 30K)	AG,AJ AL,AM	1
-30K	851-35100-5041		..SWITCH-LIGHTED PUSH BUTTON IND (ON) (V81590) (S2) (851-30768-2041 TOGETHER WITH 851-30768-802, OR -812, OR 433-100-003 SWITCHGUARD I/W BCREF7618, OR 851-30768-3041, OR BCREFA0518, OR 851-35100-5041 TOGETHER WITH 433-100-003 SWITCHGUARD) (SPEC S231T290-5041) (OPT ITEM 30J)	AG,AJ AL,AM	1

33-51-03

 **BOEING**
 COMPONENT
 MAINTENANCE MANUAL

FIG. & ITEM	PART NO.	AIRLINE PART NUMBER	NOMENCLATURE 1234567	EFF CODE	QTY PER ASSY
03- -30L	BCREF7618		..SWITCH-LIGHTED PUSH BUTTON IND (ON) (V81590) (433-673-1001-1041) (S2) (851-30768-2041 TOGETHER WITH 851-30768-802, OR -812, OR 433-100-003 SWITCHGUARD I/W BCREF7618, OR 851-30768-3041, OR BCREFA0518, OR 851-35100-5041 TOGETHER WITH 433-100-003 SWITCHGUARD) (SPEC S231T290-1041) (USE WITH CONFIG "D" MASTER MODULE. SEE REPAIR FOR ADDITIONAL INFORMATION) (OPT ITEM 30M)	AH	1
-30M	BCREFA0518		..SWITCH-LIGHTED PUSH BUTTON IND (ON) (V81590) (433-673-1004-4041) (S2) (851-30768-2041 TOGETHER WITH 851-30768-802, OR -812, OR 433-100-003 SWITCHGUARD I/W BCREF7618, OR 851-30768-3041, OR BCREFA0518, OR 851-35100-5041 TOGETHER WITH 433-100-003 SWITCHGUARD) (SPEC S231T290-4041) (USE WITH CONFIG "D" MASTER MODULE. SEE REPAIR FOR ADDITIONAL INFORMATION) (OPT ITEM 30L)	AH	1

33-51-03

ILLUSTRATED PARTS LIST
 01.101 Page 1049
 Jul 01/03

FIG. & ITEM	PART NO.	AIRLINE PART NUMBER	NOMENCLATURE	EFF CODE	QTY PER ASSY
			1234567		
03- -30N	BCREFA0518		..SWITCH-LIGHTED PUSH BUTTON IND (ON) (V81590) (433-673-1004-4041) (S2) (851-30768-2041 TOGETHER WITH 851-30768-802, OR -812, OR 433-100-003 SWITCHGUARD I/W BCREF7618, OR 851-30768-3041, OR BCREFA0518, OR 851-35100-5041 TOGETHER WITH 433-100-003 SWITCHGUARD) (SPEC S231T290-4041) (USE WITH CONFIG "D" MASTER MODULE. SEE REPAIR FOR ADDITIONAL INFORMATION)	AK	1
31	233T3210-40		DELETED		
32	S231T290-5041		DELETED		
-32A	851-35100-5041		DELETED		
-33	233T3210-39		DELETED		
-34	BCREFA0518		DELETED		
35	433-100-003		..GUARD-SWITCH (V81590) (SPEC S231T290-822)	N-T,A G-AM	1
R -35A	433-100-004		..GUARD-SWITCH (V81590) (SPEC S231T290-823)	U,V	1
40	68AT34-1		..SWITCH-TOGGLE (V91929) (S1)	N,P,R ,S,U, AG,AH ,AK,A L	1

33-51-03

 ILLUSTRATED PARTS LIST
 01.101 Page 1050
 Jul 01/03


BOEING
 COMPONENT
 MAINTENANCE MANUAL

FIG. & ITEM	PART NO.	AIRLINE PART NUMBER	NOMENCLATURE 1234567	EFF CODE	QTY PER ASSY
03- -40A	68AT34-1A		..SWITCH-TOGGLE (V91929) (S1)	Q,T,V ,AJ,A M	1
45	402-112		..GUARD- (V28277)	N-S,U ,AG-A L	1
50	800000121-1		..CONNECTOR- (V05617) (J3)	N-T,A G-AM	1
R -50A	800-000121-1		..CONNECTOR- (V05617) (J3)	U,V	1
55	233T3210-17		..BASEPLATE ASSY ATTACHING PARTS	N-V,A G-AM	1
60	NAS514P632-5		..SCREW	N-S,A G-AL	3
-60A	NAS514P632-5P		..SCREW	T,AM	3
R -60B	FH6C5CPL12BN		..SCREW- (V12324) -----*	U,V	3
65	SF6G6CBB5D		...NUT- (V12324) (SPEC BACN10PA06-6)	N-V,A G-AM	2
70	DBMB1400-6A1		...STUD ASSY- (V08524) (SPEC BACS21DD1B)	N-V,A G-AM	4
75	BACP10U0225N		...BASEPLATE	N-V,A G-AM	1

33-51-03

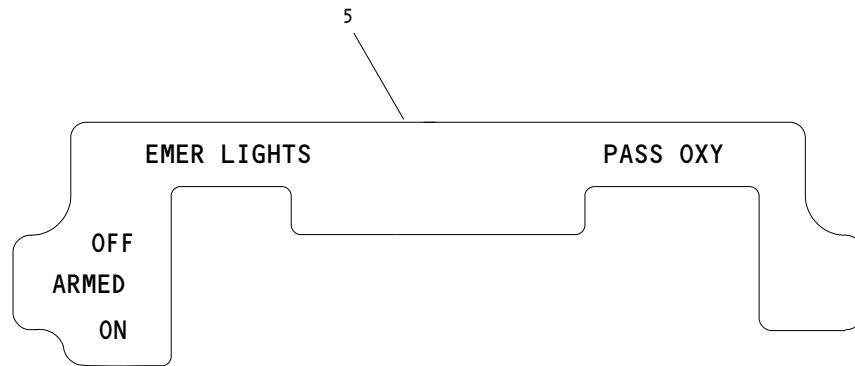
 ILLUSTRATED PARTS LIST
 01.101 Page 1051
 Jul 01/03

FIG. & ITEM	PART NO.	AIRLINE PART NUMBER	NOMENCLATURE 1234567	EFF CODE	QTY PER ASSY
03-80	NAS1801-04-5		..SCREW	N-T,A G-AM	4
R -80A	BACS12CK04U5		..SCREW	U,V	4
85	K19798-04		..NUT- (V15653) (SPEC BACN10NW1) (OPT RMA4812-160-40 (V72962)) (OPT 293162 (V60119))	N-U,A G-AM	4
90	BACC45FN12-12P7		..CONNECTOR- (J1)	N-U,A G-AM	1
95	BACC45FN16-24P		..CONNECTOR- (J2)	N-U,A G-AM	1
100	JANTX1N5618		..DIODE- (CR1-CR5)	N-U,A G-AM	5
105	4443B9		..TERMINAL-TEMP CONT PANEL (V88245) (T1-T10)	N-U,A G-AM	10
110	NAS1801-06-5		..SCREW	N-T,A G-AM	3
R -110A	BACS12CK06U5		..SCREW	U,V	3
115	MS35338-41		..WASHER	N-T,A G-AM	3
R -115A	BACW10EC06C		..WASHER	U,V	3
120	233T6200-82		..BRACKET-SPRT	N-T,A G-AM	1
125	69B46200-10		..STANDOFF	N-T,A G-AM	3
-130	233T3210-23		..WIRE BUNDLE ASSY	N-T,A G-AM	1

- Item Not Illustrated

33-51-03

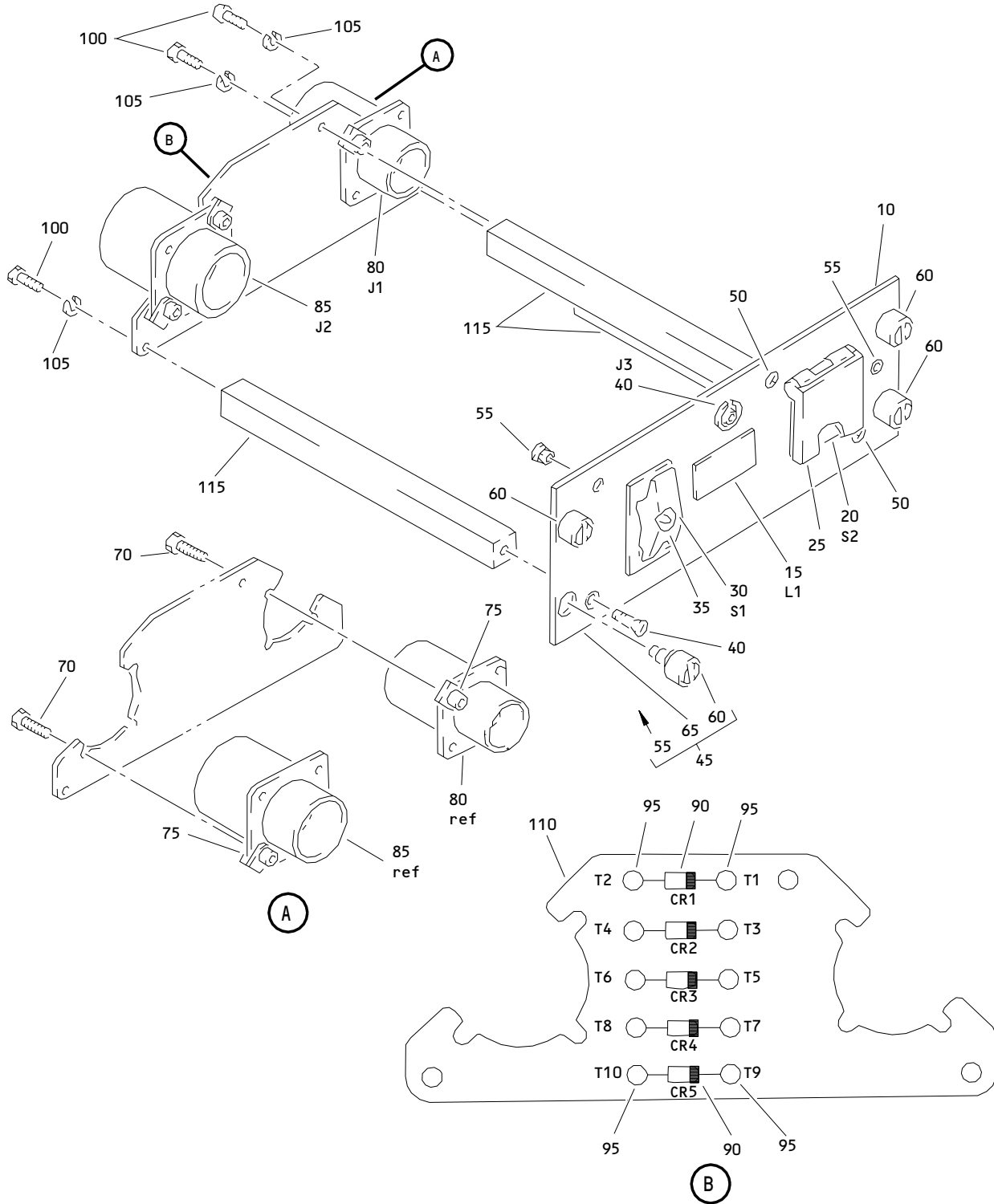
ILLUSTRATED PARTS LIST
 01.101 Page 1052
 Jul 01/03



Emergency Lights Panel Assembly, M43
Figure 4 (Sheet 1)

33-51-03

ILLUSTRATED PARTS LIST
01.1 Page 1053
Jul 01/03



Emergency Lights Panel Assembly, M43
 Figure 4 (Sheet 2)

33-51-03

ILLUSTRATED PARTS LIST
 01.1 Page 1054
 Jul 01/03


BOEING
 COMPONENT
 MAINTENANCE MANUAL

FIG. & ITEM	PART NO.	AIRLINE PART NUMBER	NOMENCLATURE 1234567	EFF CODE	QTY PER ASSY
04- -1	233T3210-1306		PANEL ASSY-M43 EMER LIGHTS (POST SB 233T3210-33-01 R1)	AP	RF
-1A	233T3210-1307		PANEL ASSY-M43 EMER LIGHTS (POST SB 233T3210-33-01 R1)	AQ	RF
-1B	233T3210-1308		PANEL ASSY-M43 EMER LIGHTS (POST SB 233T3210-33-01 R1)	AR	RF
-1C	233T3210-1309		PANEL ASSY-M43 EMER LIGHTS (POST SB 233T3210-33-01 R1)	AS	RF
-1D	233T3210-1310		PANEL ASSY-M43 EMER LIGHTS (POST SB 233T3210-33-01 R1)	AT	RF
-1E	233T3100-86		PANEL ASSY-M43 EMER LIGHTS (PRE SB 233T3210-33-01 R1)	AU	RF
-1F	233T3100-134		PANEL ASSY-M43 EMER LIGHTS (PRE SB 233T3210-33-01 R1)	AV	RF
-1G	233T3100-225		PANEL ASSY-M43 EMER LIGHTS (PRE SB 233T3210-33-01 R1)	AW	RF
-1H	233T3100-236		PANEL ASSY-M43 EMER LIGHTS (PRE SB 233T3210-33-01 R1)	AX	RF
-1J	233T3100-289		PANEL ASSY-M43 EMER LIGHTS (PRE SB 233T3210-33-01 R1)	AY	RF
-1K	233T3100-301		PANEL ASSY-M43 EMER LIGHTS (PRE SB 233T3210-33-01 R1)	AZ	RF
-1L	233T3100-329		PANEL ASSY-M43 EMER LIGHTS (PRE SB 233T3210-33-01 R1)	BA	RF
-1M	233T3100-415		PANEL ASSY-M43 EMER LIGHTS (PRE SB 233T3210-33-01 R1)	BB	RF

33-51-03

 ILLUSTRATED PARTS LIST
 01.1 Page 1055
 Jul 01/03

FIG. & ITEM	PART NO.	AIRLINE PART NUMBER	NOMENCLATURE 1234567	EFF CODE	QTY PER ASSY
04-5	800-003456		.LIGHTPLATE (V05617) (SPEC S233T100-6022) (OPT S233T100-6022 (V51896))	AU,BA	1
-5A	800-000912		.LIGHTPLATE (V05617) (SPEC S233T100-1077) (OPT S233T100-1077 (V51896))	AV-AZ	1
-5B	800-000437		.LIGHTPLATE (V05617) (SPEC S233T100-1103) (OPT S233T100-1103 (V51896))	BB	1
10	233T3210-22		.PANEL ASSY-M43 EMER LIGHTS	AV,AU	1
-10A	233T3210-25		.PANEL ASSY-M43 EMER LIGHTS	AW	1
-10B	233T3210-27		.PANEL ASSY-M43 EMER LIGHTS	AX	1
-10C	233T3210-31		.PANEL ASSY-M43 EMER LIGHTS	AY	1
-10D	233T3210-33		.PANEL ASSY-M43 EMER LIGHTS	AZ,BA	1
-10E	233T3210-37		.PANEL ASSY-M43 EMER LIGHTS	BB	1
-10F	233T3210-1022		.PANEL ASSY-M43 EMER LIGHTS	AP,AQ	1
-10G	233T3210-1025		.PANEL ASSY-M43 EMER LIGHTS	AR	1
-10H	233T3210-1027		.PANEL ASSY-M43 EMER LIGHTS	AS	1
-10J	233T3210-1033		.PANEL ASSY-M43 EMER LIGHTS	AT	1
15	BCREF6199		..LIGHT ASSY-UNARMED IND (V81590) (L1) (434-674-1005-1113) (SPEC S231T300-1113) (OPT ITEM 15A)	AP-AZ BA	1
-15A	BCREF8550		..LIGHT ASSY-UNARMED IND (V81590) (434-674-1031-2113) (L1) (SPEC S231T300-2113) (OPT ITEM 15)	AP-AZ BA	1
-15B	BCREF8550		..LIGHT ASSY-UNARMED IND (V81590) (434-674-1031-2113) (L1) (SPEC S231T300-2113)	BB	1

33-51-03

ILLUSTRATED PARTS LIST

01.1

Page 1056

Jul 01/03


BOEING
 COMPONENT
 MAINTENANCE MANUAL

FIG. & ITEM	PART NO.	AIRLINE PART NUMBER	NOMENCLATURE 1234567	EFF CODE	QTY PER ASSY
04-20	851-30768-2041		..SWITCH-LIGHTED PUSHBUTTON IND (ON) (V96182) (S2) (SPEC S231T290-2041) (851-30768-2041 TOGETHER WITH 851-30768-802 -812 OR 433-100-003 SWITCHGUARD I/W BCREFA0518 OR S231T290-5041 TOGETHER WITH 433-100-003) (OPT ITEMS 20A, 20B)	AU-AW	1
-20A	851-30768-3041		..SWITCH-LIGHTED PUSHBUTTON IND (ON) (V96182) (S2) (SPEC S231T290-3041) (851-30768-2041 TOGETHER WITH 851-30768-802 OR -812 OR 433-100-003 SWITCHGUARD I/W BCREFA0518 OR S231T290-5041 TOGETHER WITH 433-100-003) (OPT ITEMS 20, 20B)	AU-AW	1
-20B	BCREFA0518		..SWITCH-LIGHTED PUSHBUTTON IND (ON) (V81590) (433-673-1001-1041) (S2) (SPEC S231T290-1041) (851-30768-2041 TOGETHER WITH 851-30768-802 OR -812 OR 433-100-003 SWITCHGUARD I/W BCREFA0518 OR 851-30768-3041 TOGETHER WITH 433-100-003 SWITCHGUARD) (OPT ITEMS 20, 20A)	AU-AW	1

33-51-03

ILLUSTRATED PARTS LIST

01.1

Page 1057

Jul 01/03

FIG. & ITEM	PART NO.	AIRLINE PART NUMBER	NOMENCLATURE 1234567	EFF CODE	QTY PER ASSY
04- -20C	851-30768-3041		..SWITCH-LIGHTED PUSHBUTTON IND (ON) (V96182) (S2) (SPEC S231T290-3041) (851-30768-2041 TOGETHER WITH 851-30768-802 OR -812 OR 433-100-003 SWITCHGUARD I/W BCREF7618 851-30768-3041 BCREFA0518 OR S231T290-5041 TOGETHER WITH 433-100-003) (OPT ITEM 20D)	AX	1
-20D	BCREF7618		..SWITCH-LIGHTED PUSHBUTTON IND (ON) (V81590) (433-673-1001-1041) (S2) (SPEC S231T290-1041) (851-30768-2041 TOGETHER WITH 851-30768-802 OR -812 OR 433-100-003 SWITCHGUARD I/W BCREF7618 OR 851-30768-3041 TOGETHER WITH 433-100-003 SWITCHGUARD) (OPT ITEM 20C)	AX	1

33-51-03

ILLUSTRATED PARTS LIST

01.1

Page 1058

Jul 01/03


BOEING
 COMPONENT
 MAINTENANCE MANUAL

FIG. & ITEM	PART NO.	AIRLINE PART NUMBER	NOMENCLATURE 1234567	EFF CODE	QTY PER ASSY
04- -20E	S231T290-5041		..SWITCH-LIGHTED PUSHBUTTON IND (ON) (S2) (851-30768-2041 TOGETHER WITH 851-30768-802 -812 OR 433-100-003 SWITCHGUARD I/W BCREF7618 851-30768-3041 BCREFA0518 OR S231T290-5041 TOGETHER WITH 433-100-003) (OPT ITEM 20F)	BB	1
-20F	BCREFA0518		..SWITCH-LIGHTED PUSHBUTTON IND (ON) (V81590) (433-673-1004-4041) (S2) (SPEC S231T290-4041) (851-30768-2041 TOGETHER WITH 851-30768-802 -812 OR 433-100-003 SWITCHGUARD I/W BCREF7618 851-30768-3041 BCREFA0518 OR S231T290-5041 TOGETHER WITH 433-100-003) (OPT ITEM 20E)	BB	1

33-51-03

 ILLUSTRATED PARTS LIST
 01.1 Page 1059
 Jul 01/03

FIG. & ITEM	PART NO.	AIRLINE PART NUMBER	NOMENCLATURE 1234567	EFF CODE	QTY PER ASSY
04- -20G	BCREFA0518		..SWITCH-LIGHTED PUSHBUTTON IND (ON) (V81590) (433-673-1004-4041) (S2) (SPEC S231T290-4041) (851-30768-2041 TOGETHER WITH 851-30768-802 -812 OR 433-100-003 SWITCHGUARD I/W BCREF7618 851-30768-3041 BCREFA0518 OR S231T290-5041 TOGETHER WITH 433-100-003)	AY	1
-20H	BCREFA0518		..SWITCH-LIGHTED PUSHBUTTON IND (ON) (V81590) (433-673-1004-4041) (S2) (SPEC S231T290-4041) (OPT ITEMS 20J, 20K)	AZ,BA	1
-20J	S231T290-5041		..SWITCH-LIGHTED PUSHBUTTON IND (ON) (S2) (OPT ITEMS 20H, 20K)	AZ,BA	1
-20K	851-35100-5041		..SWITCH-LIGHTED PUSHBUTTON IND (ON) (V96182) (S2) (OPT ITEMS 20H, 20J)	AZ,BA	1

33-51-03

ILLUSTRATED PARTS LIST

01.1

Page 1060

Jul 01/03


BOEING
 COMPONENT
 MAINTENANCE MANUAL

FIG. & ITEM	PART NO.	AIRLINE PART NUMBER	NOMENCLATURE 1234567	EFF CODE	QTY PER ASSY
04- -20L	BCREF7618		..SWITCH-LIGHTED PUSHBUTTON IND (ON) (V81590) (433-673-1001-1041) (S2) (851-30768-2041 TOGETHER WITH 851-30768-802, OR -812, OR 433-100-003 SWITCHGUARD I/W BCREF7618, OR 851-30768-3041, OR BCREFA0518, OR 851-35100-5041 TOGETHER WITH 433-100-003 SWITCHGUARD) (SPEC S231T290-1041) (USE WITH CONFIG "D" MASTER MODULE. SEE REPAIR FOR ADDITIONAL INFORMATION) (OPT ITEMS 20M,20N,20P, 20Q)	AP-AS	1
-20M	BCREFA0518		..SWITCH-LIGHTED PUSHBUTTON IND (ON) (V81590) (433-673-1004-4041) (S2) (851-30768-2041 TOGETHER WITH 851-30768-802, OR -812, OR 433-100-003 SWITCHGUARD I/W BCREF7618, OR 851-30768-3041, OR BCREFA0518, OR 851-35100-5041 TOGETHER WITH 433-100-003 SWITCHGUARD) (SPEC S231T290-4041) (USE WITH CONFIG "D" MASTER MODULE. SEE REPAIR FOR ADDITIONAL INFORMATION) (OPT ITEMS 20L,20N,20P, 20Q)	AP-AS	1

33-51-03

ILLUSTRATED PARTS LIST

01.1

Page 1061

Jul 01/03

FIG. & ITEM	PART NO.	AIRLINE PART NUMBER	NOMENCLATURE 1234567	EFF CODE	QTY PER ASSY
04- -20N	851-30768-2041		..SWITCH-LIGHTED PUSHBUTTON IND (ON) (V81590) (S2) (851-30768-2041 TOGETHER WITH 851-30768-802, OR -812, OR 433-100-003 SWITCHGUARD I/W BCREF7618, OR 851-30768-3041, OR BCREFA0518, OR 851-35100-5041 TOGETHER WITH 433-100-003 SWITCHGUARD) (SPEC S231T290-2041) (OPT ITEMS 20L,20M,20P, 20Q)	AP-AS	1
-20P	851-30768-3041		..SWITCH-LIGHTED PUSHBUTTON IND (ON) (V81590) (S2) (851-30768-2041 TOGETHER WITH 851-30768-802, OR -812, OR 433-100-003 SWITCHGUARD I/W BCREF7618, OR 851-30768-3041, OR BCREFA0518, OR 851-35100-5041 TOGETHER WITH 433-100-003 SWITCHGUARD) (SPEC S231T290-3041) (OPT ITEMS 20L,20M,20N, 20Q)	AP-AS	1

33-51-03

ILLUSTRATED PARTS LIST

01.1

Page 1062

Jul 01/03


BOEING
 COMPONENT
 MAINTENANCE MANUAL

FIG. & ITEM	PART NO.	AIRLINE PART NUMBER	NOMENCLATURE 1234567	EFF CODE	QTY PER ASSY
04- -20Q	851-35100-5041		..SWITCH-LIGHTED PUSHBUTTON IND (ON) (V81590) (S2) (851-30768-2041 TOGETHER WITH 851-30768-802, OR -812, OR 433-100-003 SWITCHGUARD I/W BCREF7618, OR 851-30768-3041, OR BCREFA0518, OR 851-35100-5041 TOGETHER WITH 433-100-003 SWITCHGUARD) (SPEC S231T290-2041) (OPT ITEMS 20L,20M,20N, 20P)	AP-AS	1
-20R	BCREFA0518		..SWITCH-LIGHTED PUSHBUTTON IND (ON) (V81590) (433-673-1004-4041) (S2) (851-30768-2041 TOGETHER WITH 851-30768-802, OR -812, OR 433-100-003 SWITCHGUARD I/W BCREF7618, OR 851-30768-3041, OR BCREFA0518, OR 851-35100-5041 TOGETHER WITH 433-100-003 SWITCHGUARD) (SPEC S231T290-4041) (USE WITH CONFIG "D" MASTER MODULE. SEE REPAIR FOR ADDITIONAL INFORMATION) (OPT ITEM 20S)	AT	1

33-51-03

 ILLUSTRATED PARTS LIST
 01.1 Page 1063
 Jul 01/03

**COMPONENT
MAINTENANCE MANUAL**

FIG. & ITEM	PART NO.	AIRLINE PART NUMBER	NOMENCLATURE 1234567	EFF CODE	QTY PER ASSY
04- -20S	851-35100-5041		..SWITCH-LIGHTED PUSHBUTTON IND (ON) (V81590) (S2) (851-30768-2041 TOGETHER WITH 851-30768-802, OR -812, OR 433-100-003 SWITCHGUARD I/W BCREF7618, OR 851-30768-3041, OR BCREFA0518, OR 851-35100-5041 TOGETHER WITH 433-100-003 SWITCHGUARD) (SPEC S231T290-5041) (OPT ITEM 20R)	AT	1
25	851-30768-802		..GUARD-SWITCH (V96182) (SPEC S231T290-802) (OPT ITEMS 25A, 25B)	AP,AQ AU,AV	1
-25A	851-30768-812		..GUARD-SWITCH (V96182) (SPEC S231T290-812) (OPT ITEMS 25, 25B)	AP,AQ AU,AV	1
-25B	433-100-003		..GUARD-SWITCH (V81590) (SPEC S231T290-822) (OPT ITEMS 25, 25A)	AP,AQ AU,AV	1
-25C	433-100-003		..GUARD-SWITCH (V81590) (SPEC S231T290-822)	AN, AR-AT AW-AZ BA,BB	1

33-51-03

ILLUSTRATED PARTS LIST

01.1

Page 1064

Jul 01/03


BOEING
 COMPONENT
 MAINTENANCE MANUAL

FIG. & ITEM	PART NO.	AIRLINE PART NUMBER	NOMENCLATURE 1234567	EFF CODE	QTY PER ASSY
04-30	68AT34-1		..SWITCH-TOGGLE (V91929) (S1)	AN,AZ BA	1
-30A	68AT34-1A		..SWITCH-TOGGLE (V91929) (S1)	BB	1
35	402-112		..GUARD (V28277)	AN-AZ BA,BB	1
40	800000121-1		..CONNECTOR (V05617) (J3)	AN-AZ BA,BB	1
45	233T3210-17		..BASEPLATE ASSY	AN-AZ BA,BB	1
50	NAS514P632-5		..SCREW	AN-AZ BA	3
-50A	NAS514P632-5P		.SCREW -----*-----	BB	3
55	SF6G6CBB5D		...NUT (V12324) (SPEC BACN10PA06-6)	AN-AZ BA,BB	2
60	DBMB1400-6A1		...STUD ASSY (V08524) (SPEC BACS21DD1B)	AN-AZ BA,BB	4
65	BACP10U0225N		...BASEPLATE	AN-AZ BA,BB	1
70	NAS1801-04-5		..SCREW	AN-AZ BA,BB	4
75	K19798-04		..NUT (V15653) (SPEC BACN10NW1) (OPT RMA4812-160-40 (V72962)) (OPT 293162 (V60119))	AN-AZ BA,BB	4

33-51-03

ILLUSTRATED PARTS LIST

01.1

Page 1065

Jul 01/03

FIG. & ITEM	PART NO.	AIRLINE PART NUMBER	NOMENCLATURE 1234567	EFF CODE	QTY PER ASSY
04-80	BACC45FN12-12P7		..CONNECTOR (J1)	AN-AZ BA, BB	1
85	BACC45FN16-24P		..CONNECTOR (J2)	AN-AZ BA, BB	1
90	JANTX1N5618		..DIODE (CR1-CR5)	AN-AZ BA, BB	5
95	4443B9		..TERMINAL-TEMP CONT PANEL (V88245) (T1-T10)	AN-AZ BA, BB	10
100	NAS1801-06-5		..SCREW	AN-AZ BA, BB	3
105	MS35338-41		..WASHER	AN-AZ BA, BB	3
110	233T6200-82		..BRACKET-SPRT	AN-AZ BA, BB	1
115	69B46200-10		..STANDOFF	AN-AZ BA, BB	3
-120	233T3210-23		..WIRE BUNDLE ASSY	AN-AZ BA, BB	1

- Item Not Illustrated

33-51-03

ILLUSTRATED PARTS LIST
 01.1 Page 1066
 Jul 01/03